



Workbook | 2026



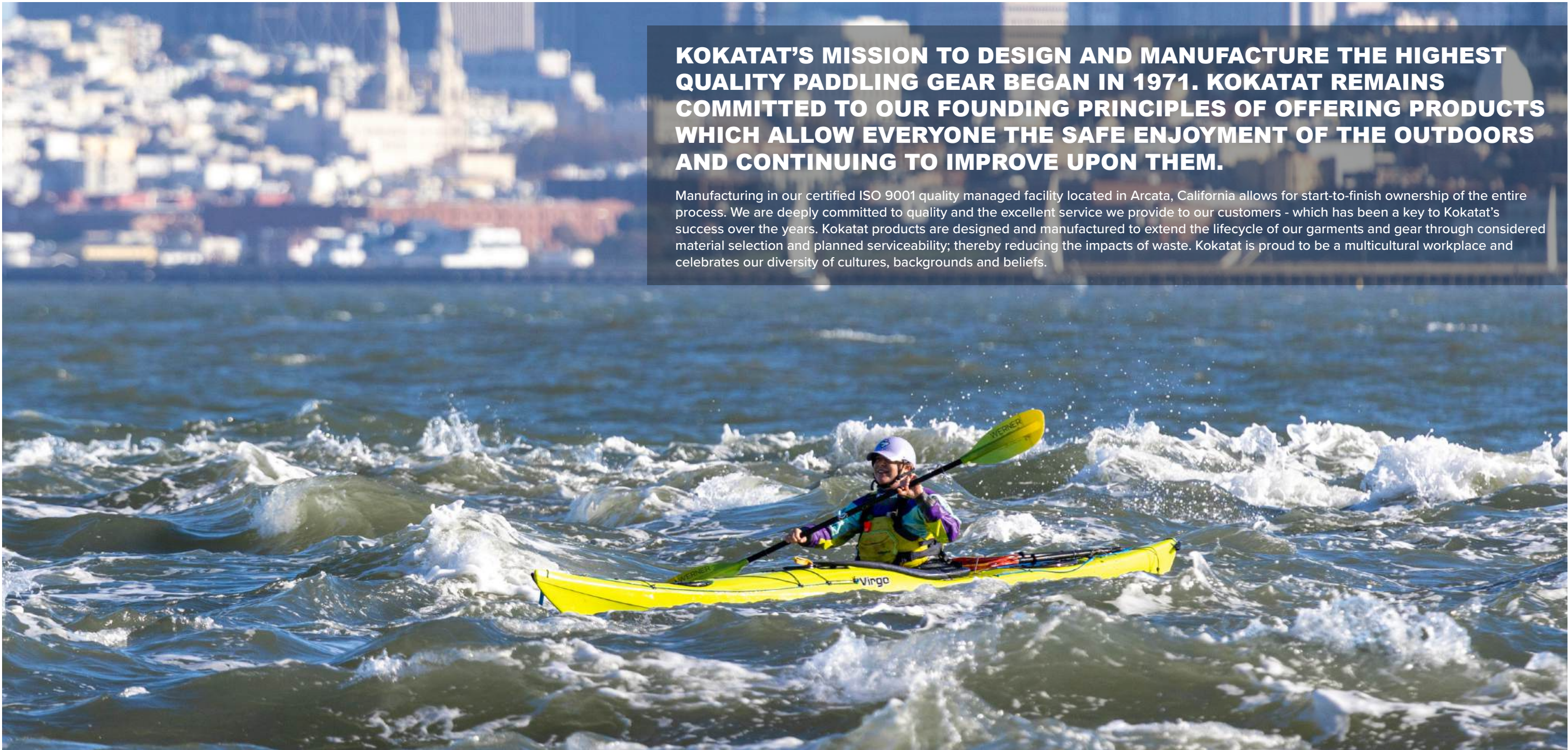


# TOC

Custom Suit Builder	4
Hydrus 3.0	5
Hydrus 2.5	12
Youth	14
Rescue	15
Life Vests	19
Life Vest Accessories	22
Insulation	23
Wet Insulation	25
Fabric & Sizing	27
All Products	28
Pricing Program	31
Sales Reps & Distributors	32

**KOKATAT’S MISSION TO DESIGN AND MANUFACTURE THE HIGHEST QUALITY PADDLING GEAR BEGAN IN 1971. KOKATAT REMAINS COMMITTED TO OUR FOUNDING PRINCIPLES OF OFFERING PRODUCTS WHICH ALLOW EVERYONE THE SAFE ENJOYMENT OF THE OUTDOORS AND CONTINUING TO IMPROVE UPON THEM.**

Manufacturing in our certified ISO 9001 quality managed facility located in Arcata, California allows for start-to-finish ownership of the entire process. We are deeply committed to quality and the excellent service we provide to our customers - which has been a key to Kokatat’s success over the years. Kokatat products are designed and manufactured to extend the lifecycle of our garments and gear through considered material selection and planned serviceability; thereby reducing the impacts of waste. Kokatat is proud to be a multicultural workplace and celebrates our diversity of cultures, backgrounds and beliefs.

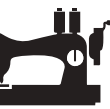




HANDCRAFTED IN ARCATA, CA

CUSTOM SUIT AND TOP BUILDER

 **SELECT YOUR KOKATAT PRODUCT**  
**Hydrus:** Meridian • Icon • Odyssey • Swift Entry  
• Stoke Dry Top

 **CUSTOM OPTIONS**  
Colors • Sizing • Socks • Relief Zipper  
• Gaskets • Cuffs

 4-5 Week Build Time  
[www.kokatat.com](http://www.kokatat.com)











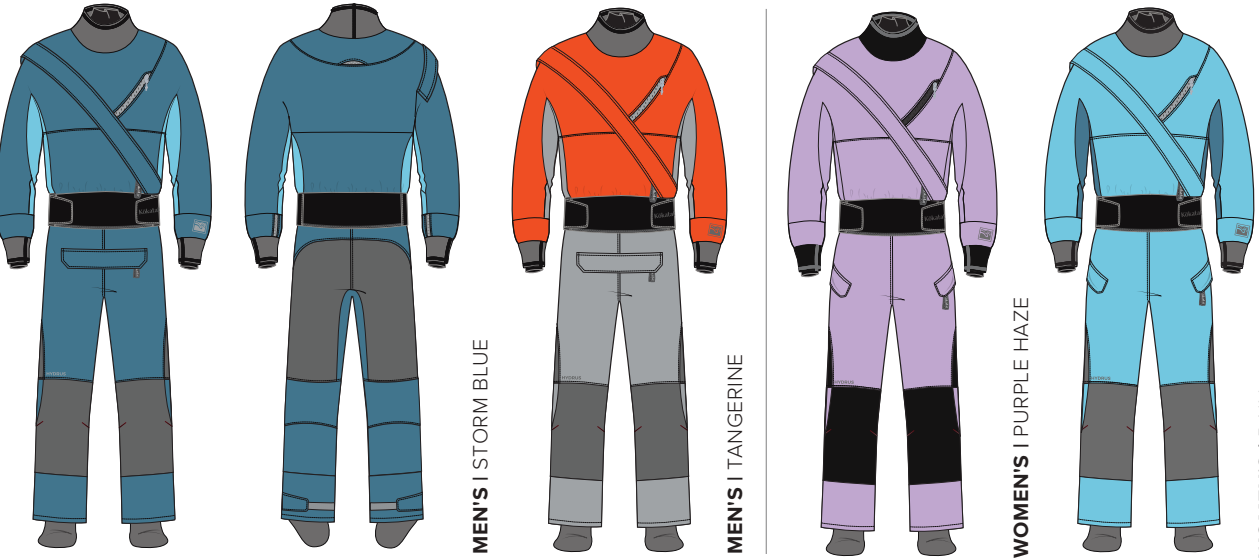
YOUR SUIT. YOUR TOP. YOUR WAY.

TECHNICAL SPECIFICATIONS

HYDRUS 2.5 | 3.0 | TOUGH

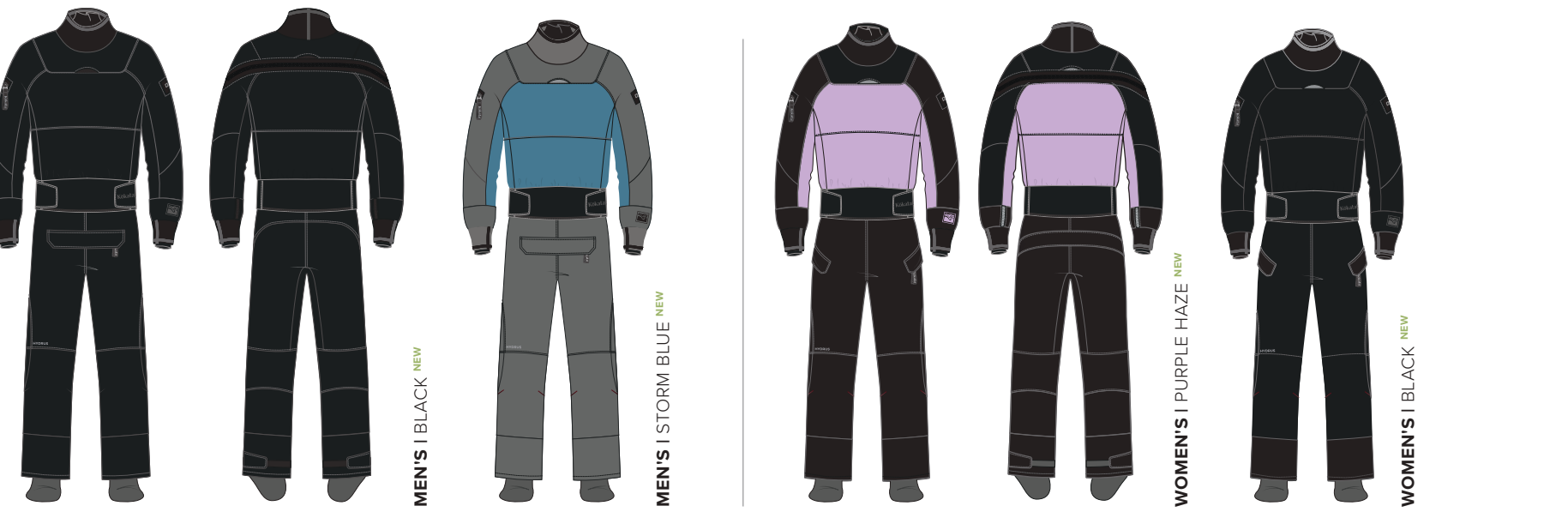
Kokatat's Hydrus 2.5, 3.0 and Tough products utilize a proprietary waterproof and breathable fabric developed specifically for the demands of the paddling environment. Showcasing Kokatat's industry leading design, superior construction techniques, in-house repair facility, and limited lifetime warranty. Made in Arcata, California.

MERIDIAN DRY SUIT



FABRIC	Hydrus 3.0 with 330D Hydrus Tough seat and knees
ENTRY & RELIEF	Nylon waterproof front entry zipper • Nylon waterproof front relief zipper for men, rear dropseat for women
NECK	Latex gasket with neoprene punch through collar
WRIST	Latex gasket with neoprene punch through cuff
SOCKS	Hydrus 3.0
FEATURES	Dual adjustable overskirt with "hook & loop" compatible Ariaprene™ • Self-draining, zippered chest pocket with key lanyard • Adjustable bungee drawcord at waist • Every suit 100% fill tested; guaranteed to be dry
CUSTOM OPTIONS	Sizing, color, and more (see pg. 6)
MEN'S COLORS	Storm Blue, Tangerine
WOMEN'S COLORS	Purple Haze, Rain
SIZES	Men's S-XXL, Wmn's S-L, XLS

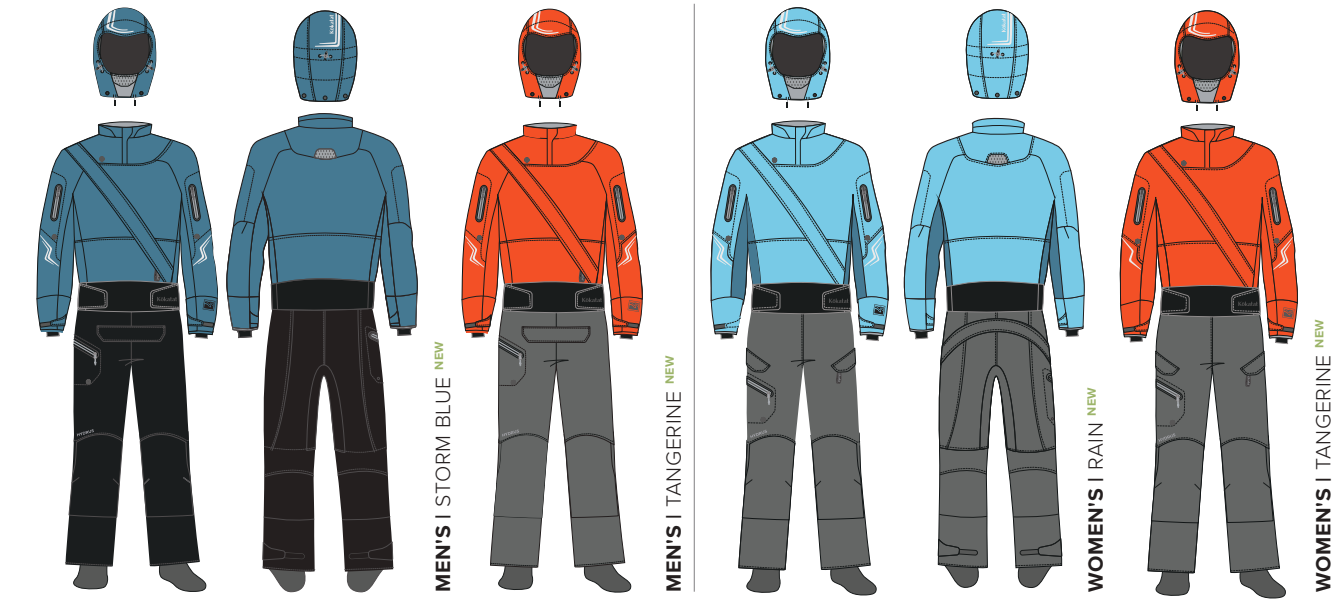
ICON DRY SUIT NEW



FABRIC	Hydrus 3.0 with 330D Hydrus Tough shoulder, arm, pant
ENTRY & RELIEF	Rear entry nylon waterproof zipper • Nylon front relief zipper for men • Nylon rear drop seat for women
NECK	Latex gasket with neoprene punch through collar
WRIST	Latex gasket with neoprene punch through cuff
SOCKS	Hydrus 3.0
FEATURES	Self-draining, zippered chest pocket with key lanyard • Adjustable bungee drawcord at waist • Dual adjustable overskirt with “hook & loop” compatible Ariaprene™ • Every suit 100% fill tested; guaranteed to be dry
CUSTOM OPTIONS	Sizing and color (see pg. 6)

MEN'S COLORS	Black, Storm Blue
WOMEN'S COLORS	Purple Haze, Black
SIZES	Men's S-XXL, Wmn's S-L, XLS

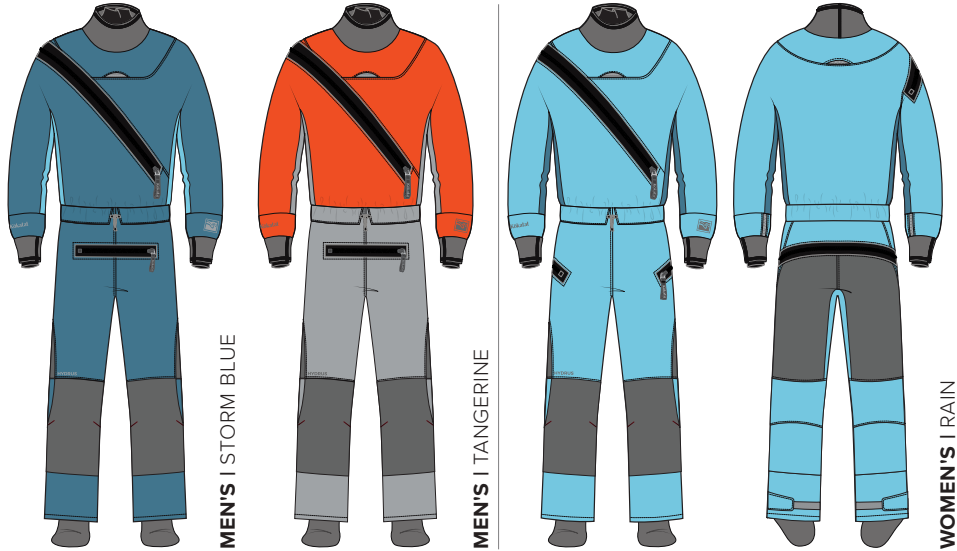
ODYSSEY DRY SUIT NEW



FABRIC	Hydrus 3.0 with 330D Hydrus Tough Pant
ENTRY & RELIEF	Front entry nylon waterproof zipper • Nylon front relief for men, nylon rear dropseat for women
NECK	Latex gasket with GORE-TEX Paclite® technology removable hood
WRIST	Latex gasket with adjustable “hook & loop” cuff
SOCKS	Hydrus 3.0
FEATURES	Removable hood • Removable suspenders • Left and right sleeve pockets • Dual adjustable overskirt with “hook & loop” compatible Ariaprene™ • Adjustable bungee drawcord at waist • Right thigh pocket • Left and right sleeve pockets • Reflective accents • Every suit 100% fill tested; guaranteed to be dry
CUSTOM OPTIONS	Sizing, color, and more (see pg. 6)

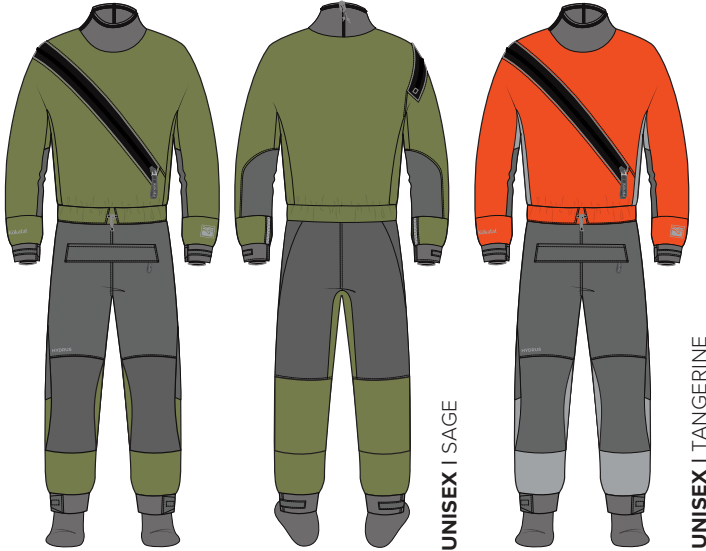
MEN'S COLORS	Storm Blue, Tangerine
WOMEN'S COLORS	Rain, Tangerine
SIZES	Men's S-XXL, Wmn's S-L, XLS

SWIFT ENTRY DRY SUIT



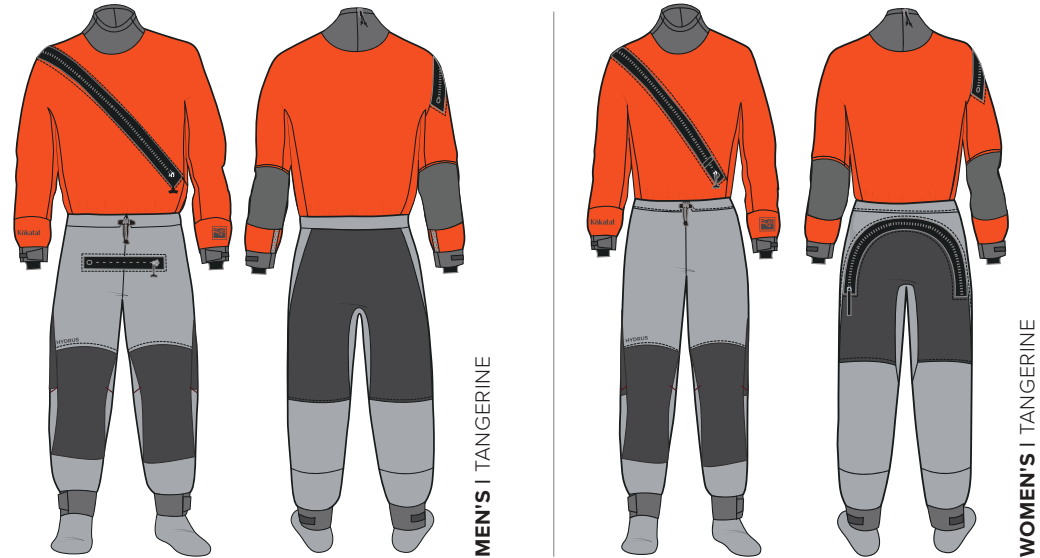
FABRIC	Hydrus 3.0 with 330D Hydrus Tough seat and knees
ENTRY & RELIEF	Nylon waterproof front entry zipper • Nylon waterproof front relief zipper for men, rear dropseat for women
NECK	Latex gasket with neoprene punch through collar
WRIST	Latex gasket with neoprene punch through cuff
SOCKS	Hydrus 3.0
FEATURES	Adjustable bungee drawcord at waist • Every suit 100% fill tested; Guaranteed to be dry.
CUSTOM OPTIONS	Sizing, color, and more (see pg. 6)
MEN'S COLORS	Storm Blue, Tangerine
WOMEN'S COLORS	Rain
SIZES	Men's S-XXL, LK, Women's S-L, XLS

SUPERNOVA ANGLER SEMI-DRY SUIT



FABRIC	Hydrus 3.0 with 330D Hydrus Tough lap, seat, knees and elbows
ENTRY & RELIEF	Nylon waterproof front entry zipper • Nylon waterproof front relief zipper
NECK	Neo Cinch Collar
WRIST	Latex gasket with adjustable “hook & loop” cuff
SOCKS	Hydrus 3.0 socks with gravel guard
FEATURES	330D Hydrus Tough integrated reinforcement on lap, seat, knees and elbows • Drawcord waist • Every suit 100% fill tested; guaranteed to be dry
COLORS	Sage, Tangerine
SIZES	Unisex S-XXL, LK

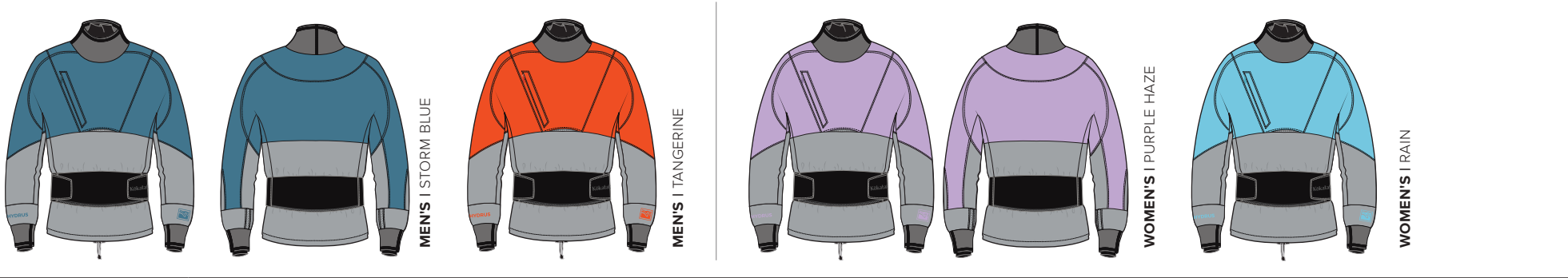
SUPERNOVA SEMI-DRY SUIT



FABRIC	Hydrus 3.0 with 330D Hydrus Tough seat, knees and elbows
ENTRY & RELIEF	Nylon waterproof front entry zipper • Nylon waterproof front relief zipper for men, rear drop seat for women
NECK	Neo Cinch Collar
WRIST	Latex gasket with adjustable “hook & loop” cuff
SOCKS	Hydrus 3.0
FEATURES	Drawcord waist • Every suit 100% fill tested; guaranteed to be dry
MEN'S COLORS	Tangerine
WOMEN'S COLORS	Tangerine
SIZES	Men's S-XXL, Wmn's S-L, XLS

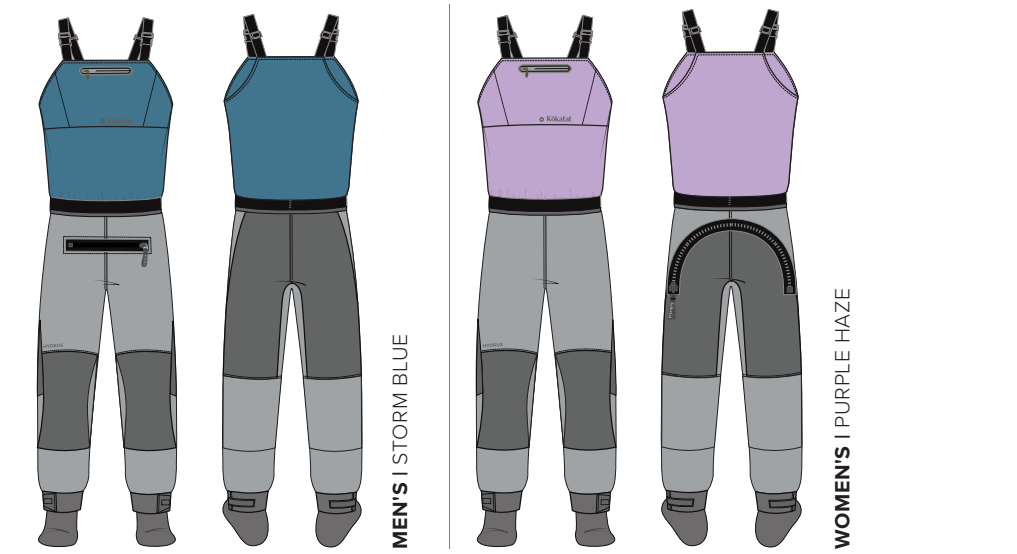


STOKE DRY TOP



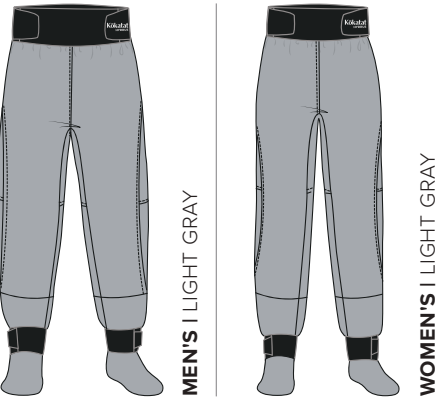
FABRIC	Hydrus 3.0
NECK	Latex gasket with neoprene punch through collar
WRIST	Latex gasket with neoprene punch through cuff
FEATURES	Dual adjustable overskirt incorporates “hook & loop” compatible Ariaprene™ • Hydrus 2.5 inner skirt • Self-draining, zippered chest pocket with key lanyard
CUSTOM OPTIONS	Sizing, color, and more (see pg. 6)
MEN'S COLORS	Storm Blue, Tangerine
WOMEN'S COLORS	Purple Haze, Rain
SIZES	Men's S-XXL, Wmn's S-L

WHIRLPOOL BIB



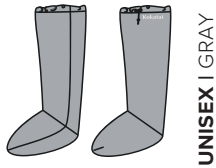
FABRIC	Hydrus 3.0 with 330D Hydrus Tough seat and knees
WAIST	Overskirt integrates with a dry top to make a dry system
RELIEF	Nylon waterproof front relief zipper for men, drop seat for women
ANKLE/SOCKS	Hydrus 3.0 socks
FEATURES	Zippered, top loading chest pocket • Adjustable suspenders
MEN'S COLORS	Storm Blue
WOMEN'S COLORS	Purple Haze
SIZES	Men's S-XXL, Wmn's S-L

TEMPEST PANT



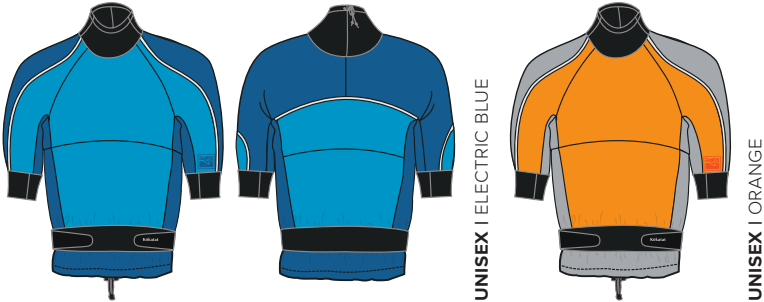
FABRIC	Hydrus 3.0
WAIST	Tall neoprene waistband with "hook & loop" tabs
ANKLE / SOCKS	Hydrus 3.0 socks
MEN'S COLOR	Light Gray
WOMEN'S COLOR	Light Gray
SIZES	Men's S-XXL, Wmn's S-L

LAUNCH SOCK



FABRIC	Hydrus 3.0
FEATURES	Knee-high length • Adjustable bungee drawstring closure
COLOR	Light Gray
SIZES	Unisex XS-L

BLAST SEMI-DRY SHORTY



FABRIC	Hydrus 2.5
NECK	Neo Cinch Collar
BICEP	Punch through coated Lycra® stretch cuff
FEATURES	Double tunnel • Dual adjustable outer skirt incorporates “hook & loop” compatible neoprene
COLORS	Electric Blue, Orange
SIZES	Unisex S-XL

TEMPEST JACKET



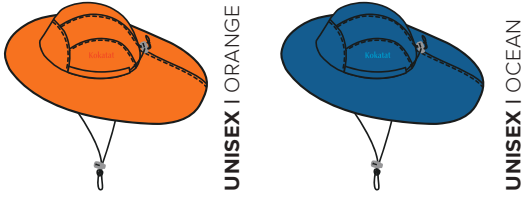
FABRIC	Hydrus 2.5
NECK	Neo Cinch Collar
WRIST	Latex gasket with adjustable “hook & loop” cuff
FEATURES	Double tunnel • Drawcord adjustable outer skirt
COLORS	Orange, Ocean
SIZES	Unisex S-XXXL

STORM CAG



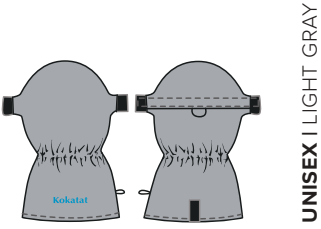
FABRIC	Hydrus 2.5
NECK	Hood
WRIST	Adjustable coated Lycra® splash cuff
FEATURES	Full coverage pullover with integrated adjustable shock cord rand • Oversize cut for full mobility over outerwear and PFD • Large self-draining front cargo and sleeve pocket with zippered closure • Pass-through behind cargo pocket for access to PFD • Large pile lined hand warmer pocket • Stuffs into hood for storage
COLORS	Orange
SIZES	Unisex One size fits most (fits up to 21.5" x 38" cockpit, jacket size XL)

SEAWESTER



FABRIC	Hydrus 2.5
FEATURES	Mesh lining with Polartec® Power Dry® sweat band • Adjustable, cinch cord chin strap • Floating foam bill • Dark, non-glare surface under brim
COLORS	Orange, Ocean
SIZES	Unisex S-L

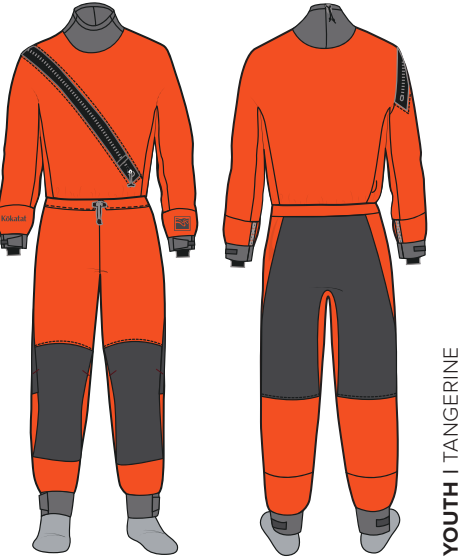
KAYAK MITT



FABRIC	Hydrus 2.5
FEATURES	Pile-lined hand warmer mitts • Secures around paddle shaft with “hook & loop” closure
COLOR	Light Gray
SIZES	One size fits most



YOUTH SUPERNOVA SEMI-DRY SUIT



YOUTH | TANGERINE

FABRIC	Hydrus 3.0 with 330D Hydrus Tough seat and knees
ENTRY & RELIEF	Nylon waterproof zipper
NECK	Neo Cinch Collar
WRIST	Latex gasket with adjustable “hook & loop” cuff
SOCKS	Hydrus 3.0 socks
FEATURES	Drawcord waist • Every suit 100% fill tested; guaranteed to be dry
YOUTH COLORS	Tangerine
SIZES	Youth M-XL

YOUTH SUPER BREEZE



YOUTH | ORANGE

FABRIC	Hydrus 2.5
NECK	Adjustable, gusseted coated Lycra® splash collar
WRIST	Adjustable, coated Lycra® splash cuffs
FEATURES	Zippered mesh chest pocket • Bungee drawcord waist
YOUTH COLORS	Orange
SIZES	Youth S-L

YOUTH SQUIRT PANT



YOUTH | OCEAN

FABRIC	Hydrus 2.5
WAIST	Wide elastic drawstring waist
ANKLE	Adjustable neoprene ankle cuffs
YOUTH COLOR	Ocean
SIZES	Youth S-L

HYDRUS TWO.FIVE

HUSTLER



TYPE V | MANTIS

TYPE V | BLACK

FABRIC	500D Cordura®
FOAM	Gaia® PVC-free and PE
ENTRY	Pullover
POCKETS	Large, zippered front pocket with internal organization
FEATURES	Sculpted foam panels that wrap around torso • Adjustable padded shoulder straps • Three side adjustments for a secure fit • Front lash tab • Quick release chest harness and O-ring, Tether/tow system ready • Sleeve for River Tow Tether or cow tail
CERTIFICATION	US Coast Guard, ISO (Europe)
UL COLORS	Mantis, Black
ISO COLORS	Mantis, Black
SIZES (BUOYANCY LBS / OZ)	XS/S (16/00), M/L (16/00), XL/XXL (16/00)

MAXIMUS CENTURION



TYPE V | RED

TYPE V | MANTIS

TYPE V | BLACK

FABRIC	500D Cordura®
FOAM	Gaia® PVC-free and PE
ENTRY	Side
POCKETS	Large, gusseted front pocket with internal organization
FEATURES	Wide, contoured neoprene shoulder straps for unsurpassed comfort and mobility • Dynamic Suspension System (DSS) allows unrestricted movement of front flotation panels • Front lash tab, strobe anchor on vest back • Quick release chest harness and O-ring, Tether/tow system ready • Stretch mesh sleeve for River Tow Tether or cow tail • Comes with Belly Pocket accessory
CERTIFICATION	US Coast Guard, Transport Canada, ISO (Europe)
UL COLORS	Red, Mantis, Black
ULC COLORS	Red
ISO COLORS	Mantis, Red, Black
SIZES (BUOYANCY LBS / OZ)	XS/S (16/05), M/L (17/05), XL/XXL (18/00)



HUCK 50' THROW BAG



FABRIC 500D Cordura®

ROPE ¼" Polyethylene core, with a Polypropylene sheath (Max strength 1465 lbs)

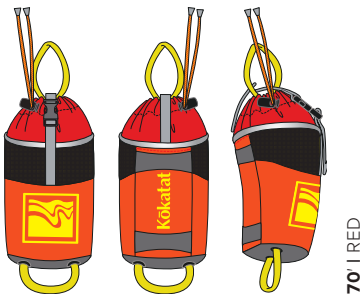
FEATURES Compact and ergonomic bag shape that fits flat against body • Mesh top for quick drying • Foam side panels for floatation • Reflective piping • Stiff bag opening for easy stuffing of rope

COLOR Mantis

SIZES 50'

KOKATAT | 2026

HUCK 70' THROW BAG



FABRIC 500D Cordura®

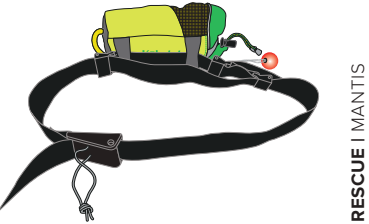
ROPE ¼" Spectra™ (Max strength 2500 lbs)

FEATURES Compact and ergonomic bag shape that fits flat against body • Mesh top for quick drying • Foam side panels for floatation • Reflective piping • Stiff bag opening for easy stuffing of rope

COLOR Red

SIZES 70'

HUCK 50' THROW BAG WITH BELT



FABRIC 500D Cordura®

ROPE ¼" Polyethylene core, with a Polypropylene sheath (Max strength 1465 lbs)

FEATURES Whether you're wearing the pocket-happy MsFit Tour or the new Poseidon, Alec Bloyd-Peskin takes us through what you should put in your pockets. Compact and ergonomic bag shape that fits flat against body • Mesh top for quick drying • Foam side panels for floatation • Reflective piping • Stiff bag opening for easy stuffing of rope • Quick release belt with adjustable quick release throw bag attachment point so you can wear throw bag on the back of your waist or in your lap

COLOR Mantis

SIZE 50'

HUCK THROW BAG BELT

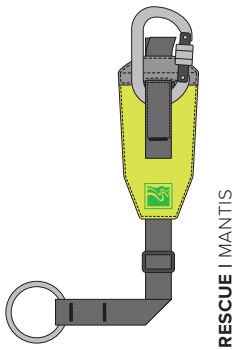


FABRIC Nylon

FEATURES Compatible with Huck 50' and 70' throw bags • Quick release belt with adjustable quick release throw bag attachment point so you can wear throw bag on the back of your waist or in your lap

COLOR Black

RIVER TOW TETHER



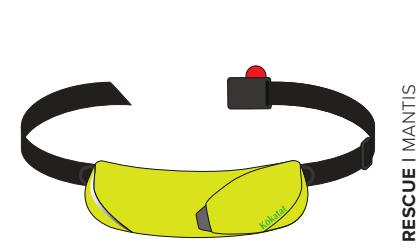
FABRIC 500D Cordura®

FEATURES 5' webbing • Locking carabiner

COLOR Mantis



SLIPSTREAM WAIST TOW SYSTEM



RESCUE | MANTIS

FABRIC	210D high tenacity ripstop nylon
ROPE	¾" Dyneema® core (Max strength 525lbs)
FEATURES	50' rope with adjustable two-stage deployment • Quick release rope deployment • Nylon carabiner with float • Rope divider for easy two stage packing • Quick release waist belt • Reflective accent
COLOR	Mantis

NEPTUNE/POSEIDON QUICK RELEASE BELT



RESCUE | BLACK

FABRIC	Nylon
ROPE	Attaches to Neptune and Poseidon for use with Touring Tow Tether • Includes Tow tether quick release buckle
COLOR	Black

REFLECTIVE TAPE



ACCESSORY | REFLECTIVE

FABRIC	SOLAS™ reflective tape
FEATURES	Fits all Kokatat PFDs
COLOR	Reflective



RESCUE

WKNDR



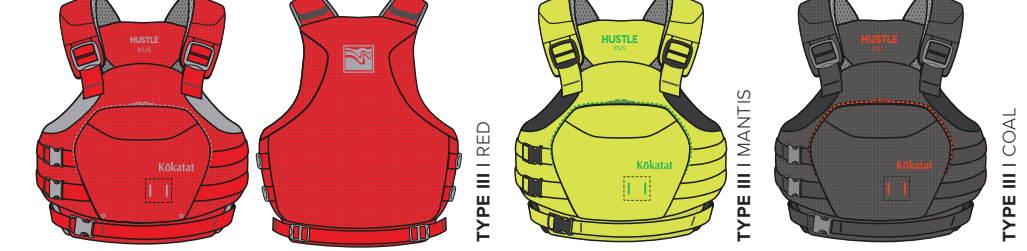
TYPE III | MANTIS

TYPE III | RED

TYPE III | COAL

FABRIC	210D high tenacity ripstop nylon
FOAM	Gaia® PVC-free and PE
ENTRY	Front
POCKETS	4 pockets (2 zippered, 2 hand warmer)
FEATURES	Easy front entry zipper • Thin foam full back panel for seat back comfort • Sculpted foam panels that wrap around torso • Adjustable padded foam shoulder straps • 2 side adjustments for secure fit • Cozy hand warmer pockets
CERTIFICATION	Harmonized (US Coast Guard & Transport Canada), ISO (Europe)
HARMONIZED UL/ULC COLORS	Mantis, Red, Coal
ISO COLORS	Mantis, Red, Coal
SIZES (BUOYANCY LBS / OZ)	XS/S (16/00), M/L (16/00), XL/XXL (16/00)

HUSTLE



TYPE III | RED

TYPE III | MANTIS

TYPE III | COAL

FABRIC	210D high tenacity ripstop nylon
FOAM	Gaia® PVC-free and PE
ENTRY	Side
POCKETS	Large, zippered front pocket with internal organization
FEATURES	Sculpted foam panels that wrap around torso • Adjustable padded shoulder straps • Three side adjustments for a secure fit • Front lash tab
CERTIFICATION	Harmonized (US Coast Guard & Transport Canada), ISO (Europe)
HARMONIZED UL/ULC COLORS	Red, Mantis, Coal
ISO COLORS	Red, Mantis, Coal
SIZES (BUOYANCY LBS / OZ)	XS/S (16/00), M/L (16/00), XL/XXL (16/00)



NEPTUNE



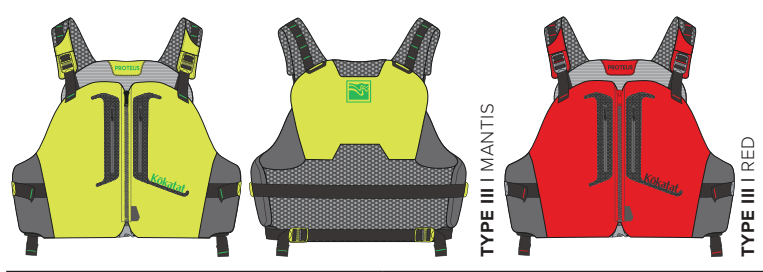
FABRIC	210D high tenacity ripstop nylon
FOAM	Gaia® PVC-free
ENTRY	Front
POCKETS	5 pockets (including dedicated pockets for VHF radio and folding knife)
FEATURES	Front and center webbing adjustments • Articulated shell and foam panels • Reflective tape • Hydration sleeve • Attachment points for fixed rescue knife and strobe light • Compatible with Tributary Hydration system and Tactic Pack • Compatible with Neptune/Poseidon Quick Release Belt
CERTIFICATION	Harmonized (US Coast Guard, Transport Canada), ISO (Europe)
HARMONIZED UL/ULC COLORS	Leaf, Red, Reef
ISO COLORS	Leaf, Red, Reef
SIZES (BUOYANCY LBS / OZ)	XS/S (16/00), M/L (16/00), XL/XXL (16/00)

LEVIATHAN



FABRIC	210D high tenacity ripstop nylon
FOAM	Gaia® PVC-free
ENTRY	Front
POCKETS	14 pockets (8 zippered, 4 mesh, 2 hand warmers)
FEATURES	Internal foam contouring for trim, relaxed fit • Articulated design enhancing comfort • Hand warmer pockets • Ultra-light, quick drying Ariaprene™ (non-toxic, hypo-allergenic) mesh back and shoulders complements high back seats
CERTIFICATION	Harmonized (US Coast Guard, Transport Canada), ISO (Europe)
HARMONIZED UL/ULC COLORS	Orange, Olive, Gray (Women's)
ISO COLORS	Olive
SIZES (BUOYANCY LBS / OZ)	XS/S (16/00), M/L (16/00), XL/XXL (16/00)

PROTEUS



FABRIC	100D stretch polyester with 210D high tenacity nylon in high wear areas
FOAM	Gaia® PVC-free
ENTRY	Front
POCKETS	4 pockets (2 zippered, 2 hand warmer)
FEATURES	Internal foam contouring for trim, relaxed fit • Articulated design enhancing comfort • Cozy hand warmer pockets • Integrated mesh panel back complements high back seats • Adjustable padded shoulder straps
CERTIFICATION	Harmonized (US Coast Guard, Transport Canada), ISO (Europe)
HARMONIZED UL/ULC COLORS	Mantis, Red
ISO COLORS	Mantis, Red
SIZES (BUOYANCY LBS / OZ)	XS/S (16/00), M/L (16/00), XL/XXL(16/00)



NAIAD



FABRIC	100D stretch polyester with 210D high tenacity nylon in high wear areas
FOAM	Gaia® PVC-free
ENTRY	Front
POCKETS	5 pockets (3 zippered, 2 hand warmer)
FEATURES	Women's design featuring internal foam contouring for liberated fit • Ultra-light, quick drying Ariaprene™ (non-toxic, hypo-allergenic) mesh back and shoulders complements high back seats • Articulated design enhancing comfort • Cozy hand warmer pockets
CERTIFICATION	Harmonized (US Coast Guard, Transport Canada), ISO (Europe)
HARMONIZED UL/ULC COLORS	Purple, Reef
ISO COLORS	Purple, Reef
SIZES (BUOYANCY LBS / OZ)	XS/S (16/00), M/L (16/00), XL/XXL(16/00)



OUTFIT TOUR	
 <div>TYPE III   NAVY</div>	
 <div>TYPE III   MANTIS</div>	
 <div>TYPE III   RED</div>	
FABRIC	500D Cordura®
FOAM	Gaia® PVC-free
ENTRY	Front
POCKETS	Two duplex front pockets, electronics pocket, and sleeve pocket behind entry zipper
FEATURES	Articulated front shell and foam panels • Padded adjustable shoulders with Hypalon® grip panels • Front and back lash tabs • Reflective tape • Eight adjustment points
CERTIFICATION	US Coast Guard
UL COLORS	Navy, Mantis, Red
SIZES (BUOYANCY LBS / OZ)	S(16/05), M(16/05), L(16/10), XL & XXL(17/00) *XXL in Mantis only



KOKATAT | 2026

TRIBUTARY	
	
 <div>ACCESSORY   MANTIS</div>	
FABRIC	210D High tenacity ripstop nylon
FEATURES	Pack attaches to all Kokatat life vests • Hydrapak® Elite 1.5 liter reversible reservoir (PVC + BPA free) • “Plug-n-play” connector with 36” drink tube • Zippered stash pocket for essentials
COLOR	Mantis

HYDRAPAK® ELITE 1.5 LITER RESERVOIR	
FABRIC	PVC & PBA free
FEATURES	“Plug-n-play” connector w/ 36” drink tube • Reversible reservoir makes cleaning easy • Wide slide top opening allows for fast filling and secure seal
SIZE	1.5 Liter

LIFE VESTS ACCESSORIES

OUTERCORE LONG SLEEVE SHIRT	
 <div>MEN'S   COAL</div>  <div>WOMEN'S   COAL</div>	
FABRIC	Main: 4-way stretch 90% polyester 10% spandex (5.2oz/yd², 176g/m²) Contrast Grid: 4-way stretch 92% polyester 8% spandex (4oz/yd², 136g/m²)
LAYER	Next to skin or over base layer
FEATURES	Heavyweight recycled stretch polyester • Jersey face enables smooth layering of garments and durability • Velour back provides warmth and superior moisture transportation • Articulated body mapping with lighter grid fabric in the underarm, cuffs and neck for comfort and unrestricted movement • Flat-stitched seams • Paddling specific patterns
MEN'S COLORS	Coal
WOMEN'S COLORS	Coal
SIZES	Men's S-XXL, Wmn's S-XL

OUTERCORE PANT	
 <div>MEN'S   COAL</div>  <div>WOMEN'S   COAL</div>	
FABRIC	Main: 4-way stretch 90% polyester 10% spandex (5.2oz/yd², 176g/m²) Contrast Grid: 4-way stretch 92% polyester 8% spandex (4oz/yd², 136g/m²)
LAYER	Next to skin or over base layer
FEATURES	Heavyweight recycled stretch polyester • Jersey face enables smooth layering of garments and durability • Velour back provides warmth and superior moisture transportation • Articulated body mapping with lighter grid fabric in cuffs for comfort and unrestricted movement • Flat-stitched seams • Paddling specific patterns
MEN'S COLORS	Coal
WOMEN'S COLORS	Coal
SIZES	Men's S-XL, Wmn's S-XL

INSULATION



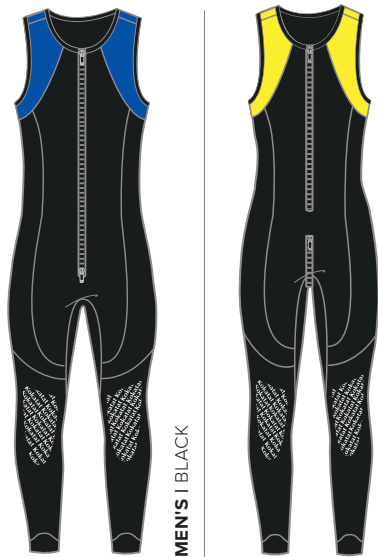
OUTERCORE HABANERO LINER



FABRIC	Main: 4-way stretch 90% polyester 10% spandex (5.2oz/yd², 176g/m²) Contrast Grid: 4-way stretch 92% polyester 8% spandex (4oz/yd², 136g/m²)
LAYER	Next to skin or over base layer
FEATURES	Heavyweight recycled stretch polyester • Jersey face enables smooth layering of garments and durability • Velour back provides warmth and superior moisture transportation • Front relief and rear relief for both men's and women's models • Articulated body mapping with lighter grid fabric in the underarm, cuffs and neck for comfort and unrestricted movement • Flat-stitched seams • Zippered chest pocket • Paddling specific patterns • Thumb loops
MEN'S COLORS	Coal
WOMEN'S COLORS	Ocean
SIZES	Men's S-XXL, Wmn's S-L, XLS

KOKATAT | 2026

NEOZIP JOHN & JANE



FABRIC	3mm double lined neoprene
LAYER	Next to skin or over base layer
FEATURES	Durable front entry zipper • Shoulder panels color coded by size • Non-skid knee reinforcement • Two-way zipper (NeoZip John) • Relief zipper (NeoZip Jane)
MEN'S COLORS	Black
WOMEN'S COLORS	Black
SIZES	Men's S-XXL, Wmn's S-L, XLS

SURFSKIN SKULL CAP



FABRIC	Lycra® outer layer laminated to a cozy polyester fleece lining
LAYER	Next to skin
FEATURES	Low profile, strapless design
COLOR	Black
SIZES	S, L

SURFSKIN BALACLAVA



FABRIC	Lycra® outer layer laminated to a cozy polyester fleece lining
LAYER	Next to skin
FEATURES	Full coverage • Pile chin
COLOR	Black
SIZES	S, L

LIGHTWEIGHT GLOVE



FABRIC	Nylon spandex upper, double layered Amara synthetic suede palm
FEATURES	Lightweight fingerless design • “Hook & loop” adjustable wrist closure
COLOR	Gray
SIZES	XS-XXL

KOZEE GLOVE



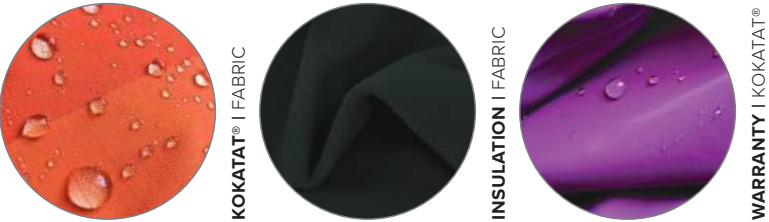
FABRIC	1mm Smoothskin neoprene back, 0.5mm neoprene palm
FEATURES	Grip dots on palm
COLOR	Black
SIZES	XS-XXL

SIZING & MEASUREMENTS



CHEST	Measure at the widest point. This may be at the nipple area or under the armpits across the upper chest. Use the larger of the two measurements.
WAIST	Measure around the narrowest part of your waist.
GIRTH	Measure from the base of the neck on top of the shoulder, Down the front, through the crotch and up the back to the starting point on top of the shoulder.
HIP	Take this measurement from the side to ensure the correct placement. Measure around the hip at the widest point of the buttocks.
INSEAM	Stand with legs straight and feet 12 inches apart. Place tape snug against the top of the crotch. Stretch the tape straight down the leg to the ankle bone.
ARM	Hold bent arm parallel to floor with hand in front of nose. Measure from the spine at the base of the neck, out around elbow and back to the wrist bone.

FABRIC



KOKATAT	Proprietary   Waterproof   Breathable • Hydrus 3.0 • Hydrus 2.5 • Hydrus Tough
INSULATION	OuterCore
WARRANTY	All Kōkatat products are fully warrantied to the original owner against defects in materials and workmanship for the reasonable life of the item when purchased from an Authorized Kōkatat Dealer. Commercial use shortens the reasonable life of an item. Products found to be defective will be repaired or replaced at Kōkatat's option. Repairs due to normal wear and tear, accident, abuse, etc., will be made for a reasonable charge. Unrepairable product not covered under warranty may be replaced at a discounted price. Latex gaskets are not covered by the Kōkatat warranty. Kōkatat specifically disavows any other representative warranty or liability relative to the condition or use of the product.

WOMEN

WOMEN	S	M	L	XL short	XL*
size	6-8	10-12	14-16	18-20	18-20
bust	34-37	37-40	40-44	45-49	43-46
waist	27-30	30-33	33-39	40-43	37-40
girth	59-61	62-65	65-67	66-68	n/a
hips	36-39	39-42	42-45	48-52	45-48
inseam	27-28	28-29	29-30	28-29	29-30
sleeve	29-30	31-32	32-33	32-33	33-34
height	5' to 5'4"	5'4" to 5'8"	5'6" to 6'	5'4" to 5'8"	5'6" to 6'
weight	100-130	130-160	160-180	180-200	180-200

\* women's XL not available in suits

UNISEX

UNISEX	XS*	S	M	L	XL	XXL	XXXL*	L king
chest	32-35	35-38	38-41	41-44	44-48	48-53	56-58	53-57
waist	25-28	28-31	31-34	34-37	37-41	41-45	46-48	45-55
girth	n/a	59-63	63-67	68-72	72-76	76-80	n/a	72-76
hips	n/a	36-39	39-41	41-44	44-47	47-50	n/a	50-52
inseam	n/a	29-30	30-31	31-32	32-33	32-33	n/a	30-31
sleeve	30	30-32	32-34	34-35	35-36	36-37	37	34-35
height	5' to 5'4"	5'2" to 5'6"	5'6" to 6'	5'10" to 6'2"	6' to 6'4"	6' to 6'6"	6'-6'4"	5'10-6'2"
weight	100-125	115-140	140-175	175-200	200-240	220-260	220-260	240-280

\* XS only available in the Tropos Super Breeze, XXXL only in the Tempest jacket.

YOUTH

YOUTH	S	M	L	XL*
size	6-8	10-12	14-16	18-20
chest	26-28	28-30	32-34	34-36
waist	22-24	24-26	26-28	30-32
hips	26-28	30-32	34-36	36-38
inseam	22-24	24-26	26-28	28-30
sleeve	24-26	26-28	28-30	30-32
height	4'2"-4'6"	4'8"-5'	5'-5'4"	5'2"-5'6"

\*For youth sizing within XL parameters (except suits) any jacket or pant in our unisex size S will fit.

GASKETS & SOCKS

NECK GASKETS	S	L
unisex garments	S	M-XXL
women's garments	S	M-XL, XLS
WRIST GASKETS	S	L
unisex garments	S	M-XXL
women's garments	S-M	L-XL,XLS

LIFE VEST

CHEST DIMENSIONS	S	M	L	XL	XXL
OutFIT Tour	36-40	40-44	44-48	48-52	50-54
CHEST DIMENSIONS	XS/S	M/L	XL/XXL		
WKNDR	32-38	40-46	49-55		
Hustle, HustleR	32-38	40-46	49-55		
Maximus Centurion	32-38	40-46	49-55		
Neptune, Proteus, Naiad, Leviathan	32-38	40-46	49-55		

ACCESSORIES

HAT SIZES	
S	L
≤ 7 3/8"	≥ 7 ½"

GLOVES		
SIZE	hand circumf.	hand length
XS	7"	6 ½"
S	8"	7"
M	9"	7 ½"
L	10"	7 ¾"
XL	11"	8"
XXL	12"	8 ½"

FOOTWEAR	
US	European
6	38
7	39
8	41
9	43
10	43.5
11	44.5
12	46
13	47.5

SUIT SOCK SIZES			
SOCK SIZE	MEN'S SHOE SIZE	WOMEN'S SHOE SIZE	SUIT SIZE
XS	3 - 5	5 - 7	youth M
S	6 - 8	8 - 10	S, WS - XLS, youth L, XL
M	9 - 12	11 - 13	M - XL, LK
L	12 - 15	13 - 14	XXL



## HYDRUS 3.0 COLLECTION



ODDYSSEY DRY SUIT  
M W



ICON DRY SUIT  
W M



MERIDIAN DRY SUIT  
M W



SUPERNOVA ANGLER  
SEMI-DRY SUIT  
U



SWIFT ENTRY DRY SUIT  
W M



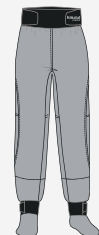
SUPERNOVA  
PADDLING SUIT  
M W



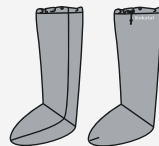
STROKE DRY TOP  
M W



WHIRLPOOL BIB  
W M



TEMPEST PANT  
M W



LAUNCH SOCK  
U

## LIFE VEST COLLECTION



HUSTLER  
U



MAXIMUS CENTURION  
U



WKNDR  
U



HUSTLE  
U



NEPTUNE  
U W



NAIAD  
W

## LIFE VEST ACCESSORIES



HUCK 50' THROW BAG  
WITH BELT



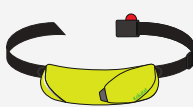
HUCK 50' THROW BAG



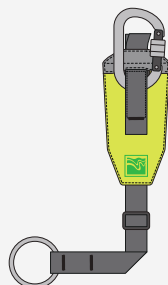
HUCK 70' THROW BAG



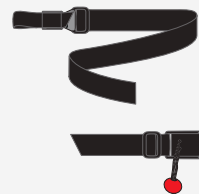
THROW BAG BELT



SLIPSTREAM



RIVER TOW TETHER



NEPTUNE/POSEIDON  
QUICK RELEASE BELT

## WET INSULATION COLLECTION



SURFSKIN BALACLAVA



SURFSKIN SKULL CAP



NEO ZIP LONG JOHN



NEO ZIP LONG JANE

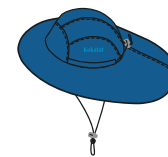
## HYDRUS 2.5 COLLECTION



BLAST SEMI-DRY SHORTY  
U



TEMPEST JACKET  
U



SEAWESTER  
U

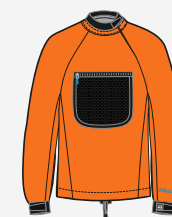


STORM CAG  
U

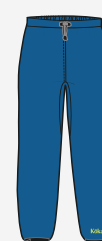
## HYDRUS YOUTH COLLECTION



SUPERNOVA SEMI-DRY  
SUIT  
Y



SUPER BREEZE JACKET  
Y



SQUIRT PANT  
Y

## INSULATION COLLECTION



OUTERCORE LONG  
SLEEVE SHIRT  
M W



OUTERCORE PANT  
M W



MEN'S HABANERO LINER  
M



WOMEN'S HABANERO  
LINER  
W

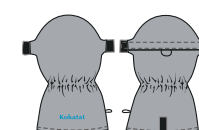
## GLOVES



KOZEE GLOVE



LIGHTWEIGHT  
PADDLING GLOVE



KAYAK MITT

WWW.KOKATAT.COM





KOKATAT 2026 PRICING PROGRAM

Order Minimums

- New dealer first order minimum \$1000
- Minimum order \$250 each
  - Annual minimum \$2500

Preseason Pricing/Programs/Deadlines

- All preseason orders for shipment after January 15, 2026
- For preseason orders placed by September 1, 2025
  - Individual order minimum \$1500
  - 6% 30 days, NET 60 (on approved credit)
  - For stocking dealers with preseason orders totaling \$5000 and placed by August 15, 2024, discount/terms will be effective for all in season reorders.
- For preseason orders placed by October 1, 2025.
  - Individual order minimum \$1500
  - 4% 30 days, NET 45 (on approved credit)
- Preseason orders may be modified or cancelled by notifying Kokatat Customer Service AT LEAST 2 WEEKS PRIOR TO SCHEDULED SHIPMENT.
- Preseason discount/terms will not be available for orders placed after October 1, 2025.
- Please note: Preseason order discounts will be reduced by 3% (processing fee) for accounts with credit card payment terms or any invoice paid via payment card.

In-season/ASAP Orders

- 2% 20 days, NET 30 (on approved credit)

Custom Labeling/Embroidery

- Embroidery/Heat Transfers, contact Kokatat Customer Service for details and quotation.

Payment Terms

- Authorized wholesale customers may pay for purchases by company check, money order or open account. Credit application and personal guarantee are required for a Kokatat authorized open account, acceptance pending credit review and approval. Customers may pay by credit card (VISA, Mastercard, Discover or American Express).

Kokatat Authorized Open Account

- Kokatat standard in-season/ASAP order payment terms are 2% 20 Days NET 30. Credit limits will be established for each authorized dealer qualifying for open credit terms. A 1.5% interest charge will be applied monthly (18% annually) to all overdue invoices/payments. Merchandise will not be shipped to any overdue customer.

Pro Deal Program (Authorized Wholesale Accounts)

- Application and qualifications are available at [www.kokatat.com/pro](http://www.kokatat.com/pro)

Product Returns

- For return authorization, please call (707-822-7621) or email ([kokatat@kokatat.com](mailto:kokatat@kokatat.com)) Kokatat Customer Service. All returns must be accompanied by a copy of invoice or packing list and have RA number clearly marked on the box exterior. All first quality returns must be in clean, like-new condition with hang tags attached, otherwise there will be a 15% re-stocking charge assessed for the items returned.

Kokatat Warranty

- All Kōkakat products are fully warrantied to the original owner against defects in materials and workmanship for the reasonable life of the item when purchased from an Authorized Kōkakat Dealer. Commercial use shortens the reasonable life of an item. Products found to be defective will be repaired or replaced at Kōkakat's option. Repairs due to normal wear and tear, accident, abuse, etc., will be made for a reasonable charge. Unrepairable product not covered under warranty may be replaced at a discounted price. Latex gaskets are not covered by the Kōkakat warranty. Kōkakat specifically disavows any other representative warranty or liability relative to the condition or use of the product.

Warranty Returns/Repairs

- A return authorization is required for all returns to Kokatat factory repair center in Arcata, California. California state law requires all used products returned for repair must be freshly laundered prior to shipment to Kokatat. A \$25 fee per item will be assessed for washing soiled garments. All returns must be shipped prepaid to Kokatat.





## REPS & DISTRIBUTORS

### REGIONAL REPS

**NEW ENGLAND:** Connecticut, Maine, Massachusetts, New Hampshire, Rhode Island, Vermont

**Jim Kaiser** • kaiserrep@gmail.com • o: 207.624.2065

**NORTHEAST:** Delaware, District of Columbia, Maryland, New Jersey, New York, Pennsylvania

**Tom Harsh** • thomas.harsh@verizon.net

t: 800.432.5957 c: 516.848.1405 f: 516.432.2561

**SOUTHEAST, MID-ATLANTIC:** Alabama, Florida, Georgia, Kentucky, Mississippi, North Carolina, South Carolina, Tennessee, Virginia, West Virginia

**Scott Sullivan** • hmscottsullivan@gmail.com

c: 828.712.3282

**MIDWEST:** Illinois, Indiana, Iowa, Kansas, Michigan, Minnesota, Missouri, North Dakota, Nebraska, Ohio, South Dakota, Wisconsin

**John Horsnell** • john.horsnell@gmail.com

c: 608.206.9242

**PACIFIC NORTHWEST, ROCKIES - WEST:** Alaska, Oregon, Washington, Arizona, California, Colorado, Idaho, Montana, Nevada, New Mexico, Texas, Utah, Wyoming

**Ted Keyes** • tedkeyesindustries@gmail.com

c: 208.867.8732 f: 815.572.8687

### CANADA:

**Nikki Rekman** • nikki@rekman.ca

o: 604.824.2988 c: 604.626.6922

### IN-HOUSE & INTERNATIONAL

#### ARKANSAS, HAWAII, LOUISIANA, OKLAHOMA:

**Kokatat** • kokatat@kokatat.com

5350 Ericson Way, Arcata, CA 95521

t: 800.225.9749 o: 707.822.7621 f: 707.822.8481

### INTERNATIONAL DISTRIBUTORS

#### AUSTRALIA: Paddle Sports Australia

paddlesports@paddlesports.com.au • www.paddlesports.com.au

**UK:** Ant Perkins • info@hotmeltkayak.vo.uk

**NORWAY:** Jim Cummings • jim@theoutdooragency.no

#### DENMARK, SWEDEN, FINLAND, THE NETHERLANDS,

**BELGIUM:** Team kayak - Kajakkæden Aps

info@kajakkaeden.dk • www.teamkayak.dk

#### GERMANY, SWITZERLAND, AUSTRIA, CZECH, FRANCE,

**SLOVENIA, ITALY, POLAND, SPAIN:** Olli Grau •

olli@sweet-service.eu

#### IRELAND: I-Canoe

shop@i-canoe.com • www.i-canoe.com

#### NEW ZEALAND: Day Two

info@daytwo.co.nz • www.daytwo.co.nz



30% PCR, produced  
with ~50% renewable  
energy, FSC certified

