



 **Kōkatat[®]**

Workbook | 2024





**KOKATAT IS DEDICATED TO DESIGN AND DEVELOP PRODUCTS THAT
SUPPORT THE SAFE ENJOYMENT OF THE OUTDOORS FOR EVERYONE.**

Our core philosophy is to manufacture products designed to extend the lifecycle of our garments and gear, through considered material selection and planned serviceability, thereby reducing waste impacts. Over 90% of Kokatat revenues are generated from goods manufactured in our Arcata, CA factory, reducing extensive supply chain impacts. The outdoor wilderness is critical to our future and we choose to support organizations and individuals focused on the protection and preservation of wild places. We are driven to take action that will eliminate systemic racism and create a multi-cultural work environment which is fair and safe for all our employees and associates.

TOC

Klamath Limited Edition <small>NEW</small>	06
GORE-TEX PRO	08
Custom Suit Builder	14
GORE-TEX Paclite®	17
Hydrus 3.0	19
Hydrus 2.5	24
Youth	28
Rescue	29
Life Vests	33
Life Vest Accessories	37
Insulation	38
Wet Insulation	41
Footwear & Gloves	42
Lifestyle	44
Fabric & Sizing	46
All Products	48
Pricing Program	51
Sales Reps & Distributors	52





KLAMATH LIMITED EDITION



UN-DAM THE KLAMATH

We are incredibly excited to be able to celebrate the removal of 4 dams from the Klamath River watershed, located from the southern Cascades in Oregon, through northern California to the Pacific coast. The Klamath drains almost 12,000 square miles and is one of the most important North American rivers for anadromous fish migration, including Salmon and Steelhead.

We are proud to celebrate the unfailing influence of our local Native American tribal communities and associations, who have inhabited the Klamath basin for more than 7000 years, in their many-years effort to restore this important watershed in Kokatat's backyard.

The limited-edition Hustle and Hustler life vests feature the beautiful watercolor art from whitewater paddler & river advocate, Hailey Thompson - Watercolor Woods.



UN-DAM THE KLAMATH
BRING THE SALMON HOME

watercolorwoods
BY HAILEY THOMPSON

TECHNICAL SPECIFICATIONS

HUSTLER NEW



TYPE V | KLAMATH NEW

FABRIC	500D Cordura®
FOAM	Gaia® PVC-free and PE
ENTRY	Pullover
POCKETS	Large, zippered front pocket with internal organization
FEATURES	Sculpted foam panels that wrap around torso • Adjustable padded shoulder straps • Three side adjustments for a secure fit • Front lash tab • Quick release chest harness and O-ring, Tether/tow system ready • Sleeve for River Tow Tether or cow tail
CERTIFICATION	US Coast Guard
UL COLORS	Klamath LE
SIZES (BUOYANCY LBS / OZ)	XS/S (16/00), M/L (16/00), XL/XXL (16/00)

HUSTLE NEW



TYPE III | KLAMATH NEW

FABRIC	210D high tenacity ripstop nylon
FOAM	Gaia® PVC-free and PE
ENTRY	Side
POCKETS	Large, zippered front pocket with internal organization
FEATURES	Sculpted foam panels that wrap around torso • Adjustable padded shoulder straps • Three side adjustments for a secure fit • Front lash tab
CERTIFICATION	Harmonized (US Coast Guard & Transport Canada)
HARMONIZED UL/ULC COLORS	Klamath LE
SIZES (BUOYANCY LBS / OZ)	XS/S (16/00), M/L (16/00), XL/XXL (16/00)

GORE-TEX NEXT LEVEL

History

Over the last 5 decades Kokatat has focused on making the best paddling apparel and gear possible. We have been working closely with W.L. Gore for the last three paddling seasons in the development of the next level of GORE-TEX PRO waterproof and breathable fabrics for paddlers, from Kokatat.

Collection

Our entire GORE-TEX collection of dry suits, dry tops and pants feature these extremely rugged and breathable GORE-TEX PRO laminates. Feedback from our field testers has been unanimous. We have taken the paddling apparel you trust to provide the best performance and comfort, and made it better.

Features

Lab and field tested like no other • Extremely rugged and breathable new GORE-TEX PRO • Uncompromised waterproof protection • Articulated patterning for comfort and freedom of movement • Durable 200 denier recycled and solution dyed face textiles • Improved and sustainable Gore durable water resistant (DWR) coating • High strength bi-component waterproof membrane • New Gore solution dyed Nylon6 micro grid backer for accelerated internal evaporation • Improved environmental footprint (47.2% reduction in water consumption and 1.6% reduction in carbon footprint)

Trust your gear, Limited Lifetime Warranty

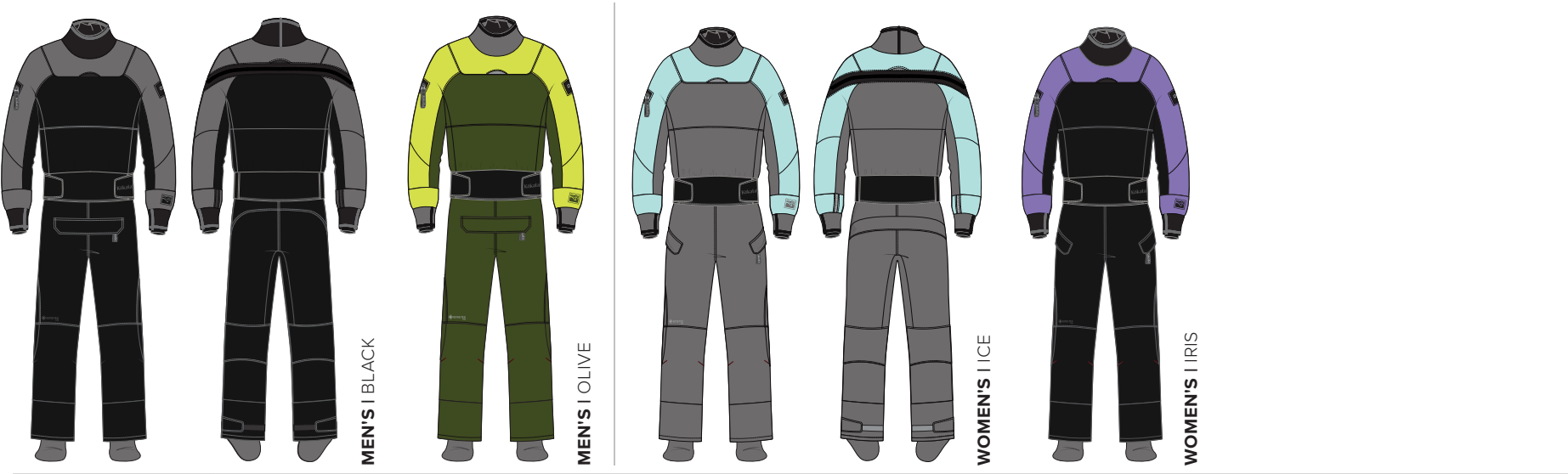


GORE-TEX PRO



TECHNICAL SPECIFICATIONS

ICON DRY SUIT

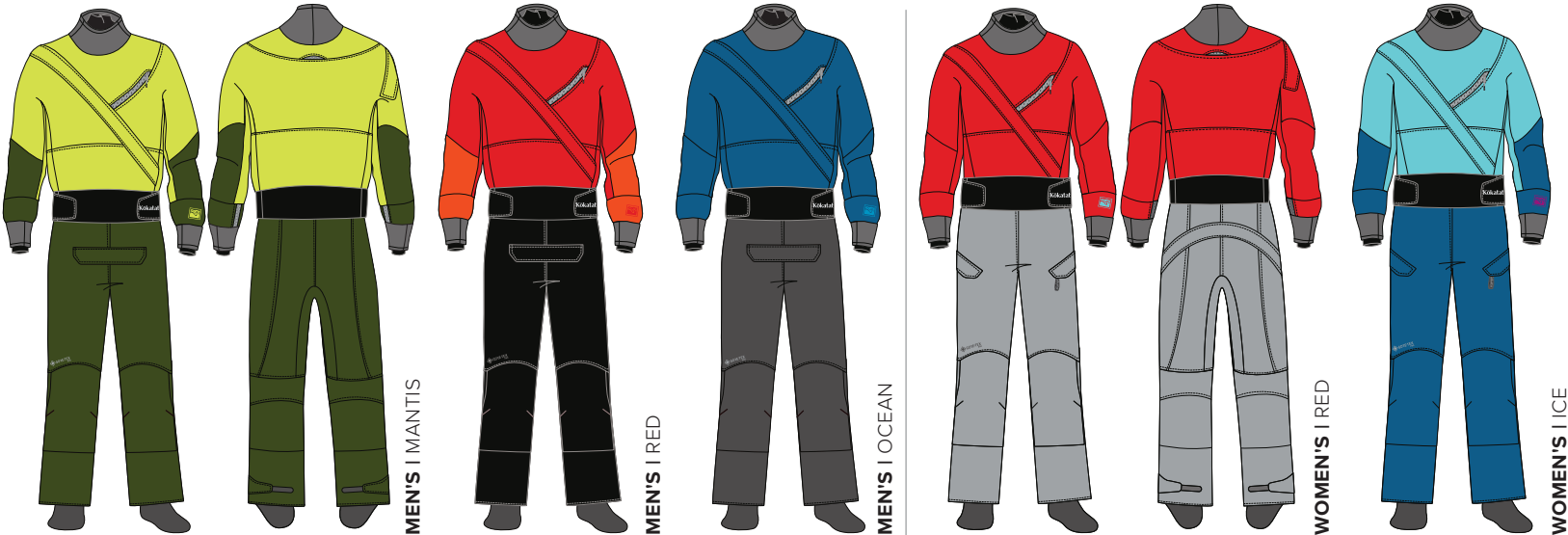


FABRIC	GORE-TEX PRO
ENTRY & RELIEF	Rear entry nylon waterproof zipper • Nylon front relief zipper for men • Nylon rear drop seat for women with improved placement for better fit and use
NECK	Latex gasket with neoprene punch through collar
WRIST	Latex gasket with neoprene punch through cuff
SOCKS	GORE-TEX PRO
FEATURES	Updated pattern and style lines for improved fit and function • Self-draining, zippered chest pocket with key lanyard • Adjustable bungee drawcord at waist • Dual adjustable overskirt with “hook & loop” compatible Ariaprene™ • Every suit 100% fill tested; guaranteed to be dry
CUSTOM OPTIONS	Sizing, color (see pg. 14)
MEN'S COLORS	Black, Olive
WOMEN'S COLORS	Ice, Iris
SIZES	Men's S-XXL, Wmn's S-L, XLS



TECHNICAL SPECIFICATIONS

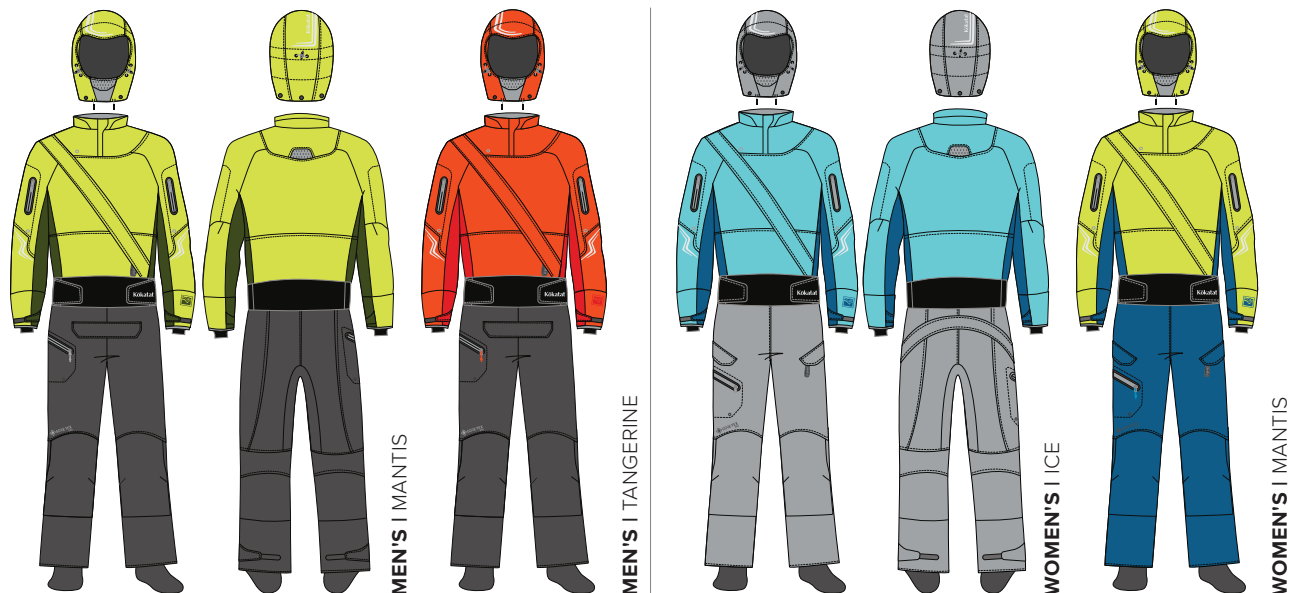
MERIDIAN DRY SUIT



FABRIC	GORE-TEX PRO
ENTRY & RELIEF	Front entry nylon waterproof zipper • Nylon front relief zipper for men • Nylon rear dropseat for women
NECK	Latex gasket with neoprene punch through collar
WRIST	Latex gasket with neoprene punch through cuff
SOCKS	GORE-TEX PRO
FEATURES	Dual adjustable overskirt with “hook & loop” compatible Ariaprene™ • Self-draining, zippered chest pocket with key lanyard • Adjustable bungee drawcord at waist • Every suit 100% fill tested; guaranteed to be dry
CUSTOM OPTIONS	Sizing, color, and more (see pg. 14)
MEN'S COLORS	Mantis, Red, Ocean
WOMEN'S COLORS	Red, Ice
SIZES	Men's S-XXL, Wmn's S-L, XLS



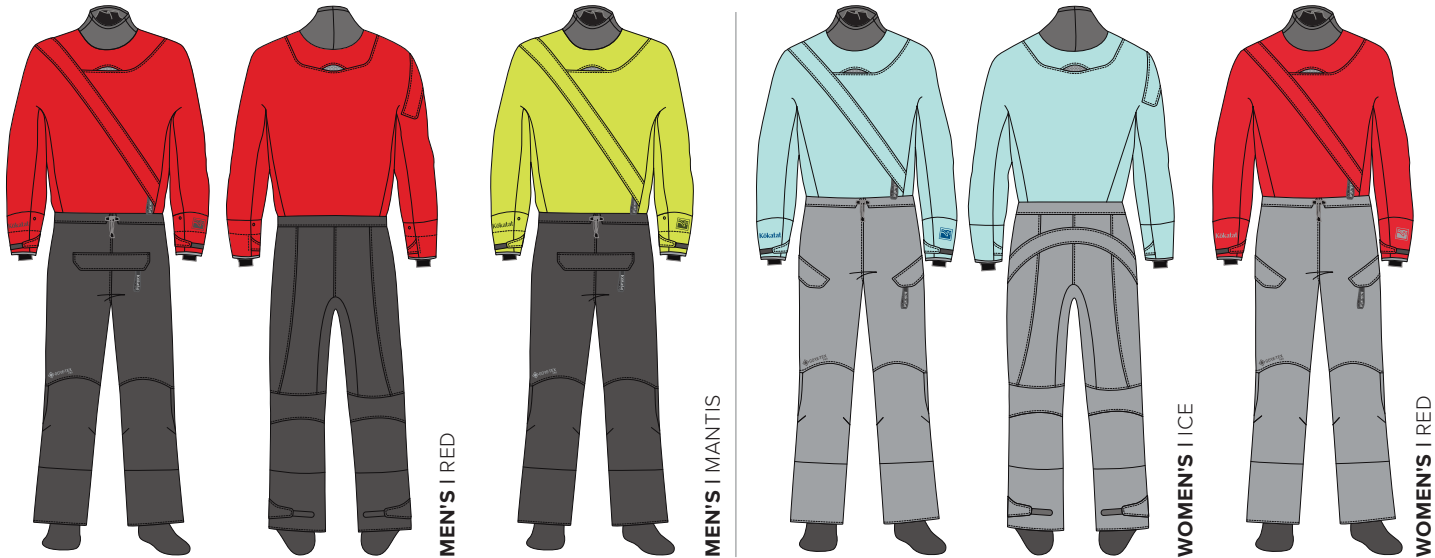
ODYSSEY DRY SUIT



FABRIC	GORE-TEX PRO
ENTRY & RELIEF	Front entry nylon waterproof zipper • Nylon front relief for men, nylon rear dropseat for women
NECK	Latex gasket with GORE-TEX Paclite® technology removable hood
WRIST	Latex gasket with adjustable “hook & loop” cuff
SOCKS	GORE-TEX PRO
FEATURES	Removable hood • Removable suspenders • Left and right sleeve pockets • Dual adjustable overskirt with “hook & loop” compatible Ariaprene™ • Adjustable bungee drawcord at waist • Right thigh pocket • Left and right sleeve pockets • Reflective accents • Every suit 100% fill tested; guaranteed to be dry
CUSTOM OPTIONS	Sizing, color, and more (see pg. 14)
MEN'S COLORS	Mantis, Tangerine
WOMEN'S COLORS	Ice, Mantis
SIZES	Men's S-XXL, Wmn's S-L, XLS

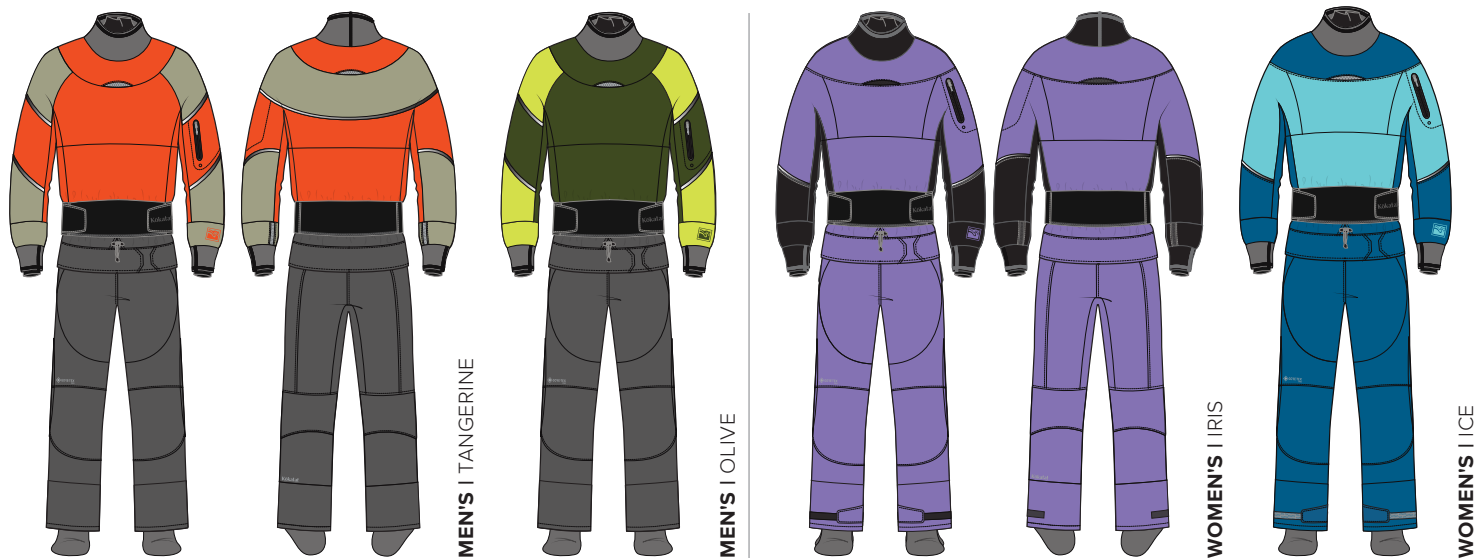
TECHNICAL SPECIFICATIONS

LEGACY DRY SUIT



FABRIC	GORE-TEX PRO
ENTRY & RELIEF	Front entry nylon waterproof zipper • Nylon front relief zipper for men • Nylon rear dropseat for women
NECK	Latex gasket with neoprene punch through collar
WRIST	Latex gasket with adjustable “hook & loop” cuff
SOCKS	GORE-TEX PRO
FEATURES	Adjustable bungee drawcord at waist • Entry and relief/dropseat covers • Every suit 100% fill tested; guaranteed to be dry
CUSTOM OPTIONS	Sizing, color, and more (see pg. 14)
MEN'S COLORS	Red, Mantis
WOMEN'S COLORS	Ice, Red
SIZES	Men’s S-XXL, LK, Wmn’s S-L, XLS

IDOL DRY SUIT



FABRIC

GORE-TEX PRO

ENTRY & RELIEF

SwitchZip waterproof fully separating entry/relief zipper system

NECK

Latex gasket with neoprene punch through collar

WRIST

Latex gasket with neoprene punch through cuff

SOCKS

GORE-TEX PRO

FEATURES

It's a dry suit, it's a dry top, it's a pant. Kokatat's exclusive multi-function paddling apparel featuring SwitchZip technology. Fully separating dry suits and tops provide the ultimate in flexible performance and function. • Strategic zipper placement sits between backband and seat • No entry zipper on torso • One zipper for entry and relief • Self-draining, zippered sleeve pocket with key lanyard • Dual adjustable over skirt with "hook & loop" compatible Ariaprene™ • Zipper flap to protect top half of zipper in dry top configuration • Every suit 100% fill tested; guaranteed to be dry

CUSTOM OPTIONS

Sizing, color (see pg. 14)

MEN'S COLORS

Tangerine, Olive

WOMEN'S COLORS

Iris, Ice

SIZES

Men's S-XXL, Wmn's S-L, XLS

HANDCRAFTED IN ARCATA, CA

CUSTOM SUIT BUILDER



SELECT YOUR GORE-TEX PRO SUIT

Odyssey • Idol • Icon • Meridian • Legacy



CUSTOM OPTIONS

Hood • Socks • Relief Zipper • Gaskets • Cuffs
• Pockets • Reflective Tape • Suspenders



4-5 Week Build Time

www.kokatat.com

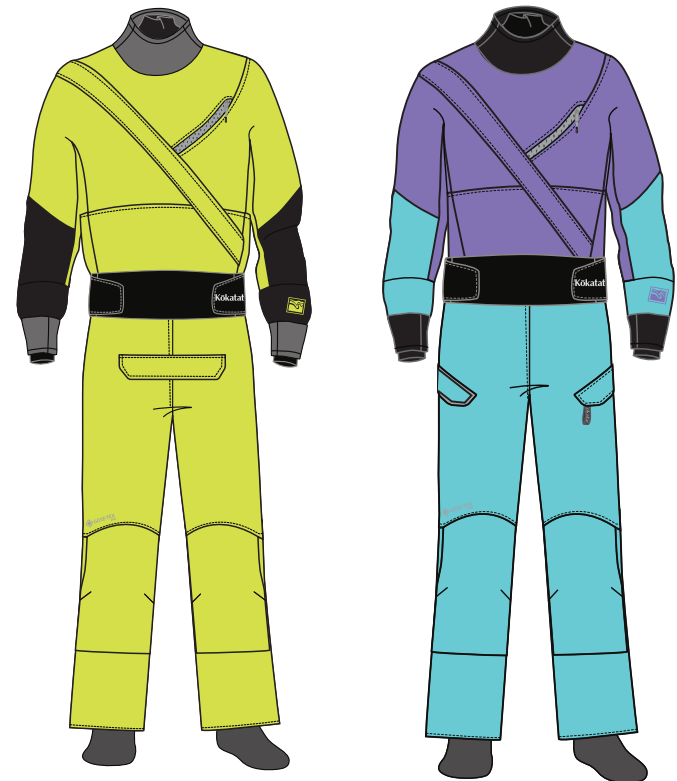
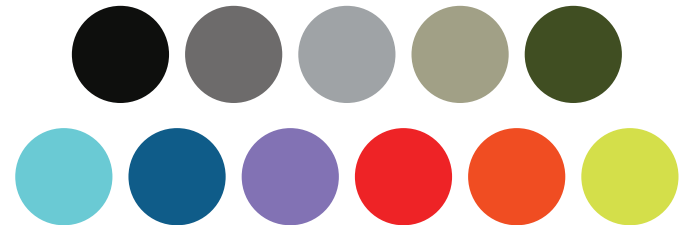
INSEAM



SLEEVE



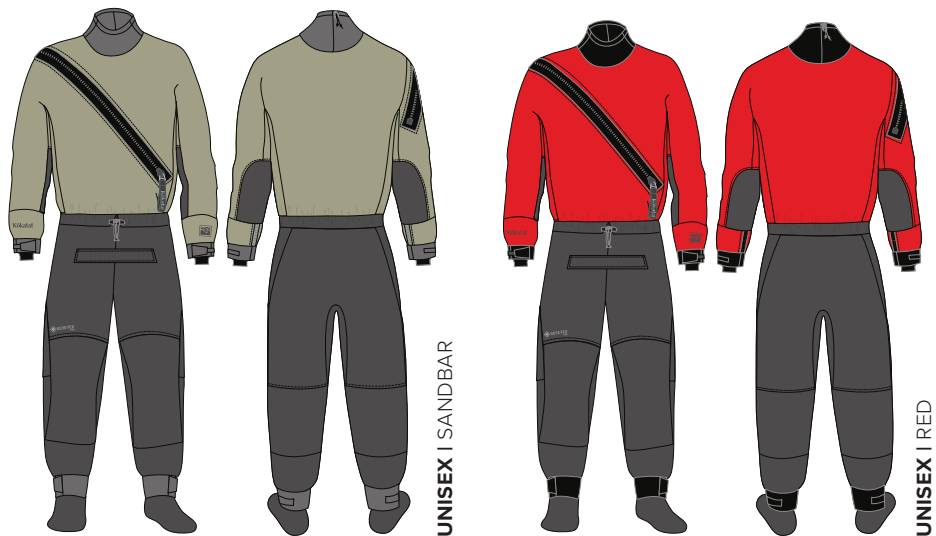
TORSO



YOUR SUIT. YOUR WAY.

TECHNICAL SPECIFICATIONS

SUPERNOVA ANGLER SEMI-DRY SUIT



FABRIC	GORE-TEX PRO
ENTRY & RELIEF	Nylon waterproof front entry • Nylon waterproof front relief zipper
NECK	Neo Cinch Collar
WRIST	Latex gasket with adjustable “hook & loop” cuff
SOCKS	GORE-TEX PRO socks with gravel guard
FEATURES	Drawcord waist • Every suit 100% fill tested; guaranteed to be dry
COLORS	Sandbar, Red
SIZES	Unisex S-XXL, LK

TECHNICAL SPECIFICATIONS

OM DRY TOP



FABRIC	GORE-TEX PRO
NECK	Latex gasket with neoprene punch through collar
WRIST	Latex gasket with neoprene punch through cuff
FEATURES	Named after our Founder, Steve O'Meara • Dual adjustable outer skirt incorporates “hook & loop” compatible Ariaprene™ • Lightweight GORE-TEX PRO inner skirt • Self-draining, zippered sleeve pocket with key lanyard
MEN'S COLORS	Mantis, Ocean, Red
WOMEN'S COLORS	Ice, Mantis
SIZES	Men's S-XXL, Wmn's S-L

PADDLING JACKET



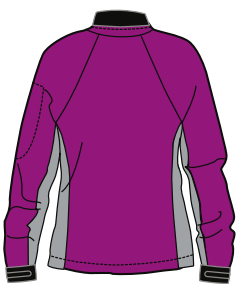
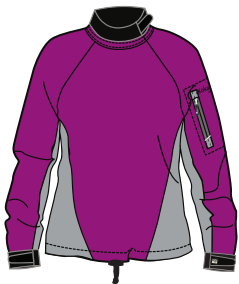
MEN'S | OCEAN



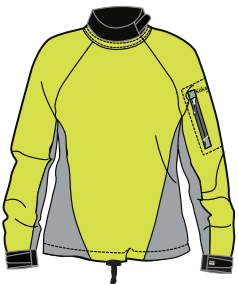
MEN'S | TANGERINE



MEN'S | MANTIS



WOMEN'S | BERRY



WOMEN'S | MANTIS

FABRIC	GORE-TEX Paclite® technology
NECK	Adjustable, gusseted, coated Lycra® splash collar
WRIST	Adjustable, coated Lycra® splash cuffs
FEATURES	Self-draining, zippered, left sleeve pocket • Bungee drawcord waist
MEN'S COLORS	Ocean, Tangerine, Mantis
WOMEN'S COLORS	Berry, Mantis
SIZES	Men's S-XXL (XXL in Tangerine only) Women's S-L

TECHNICAL SPECIFICATIONS

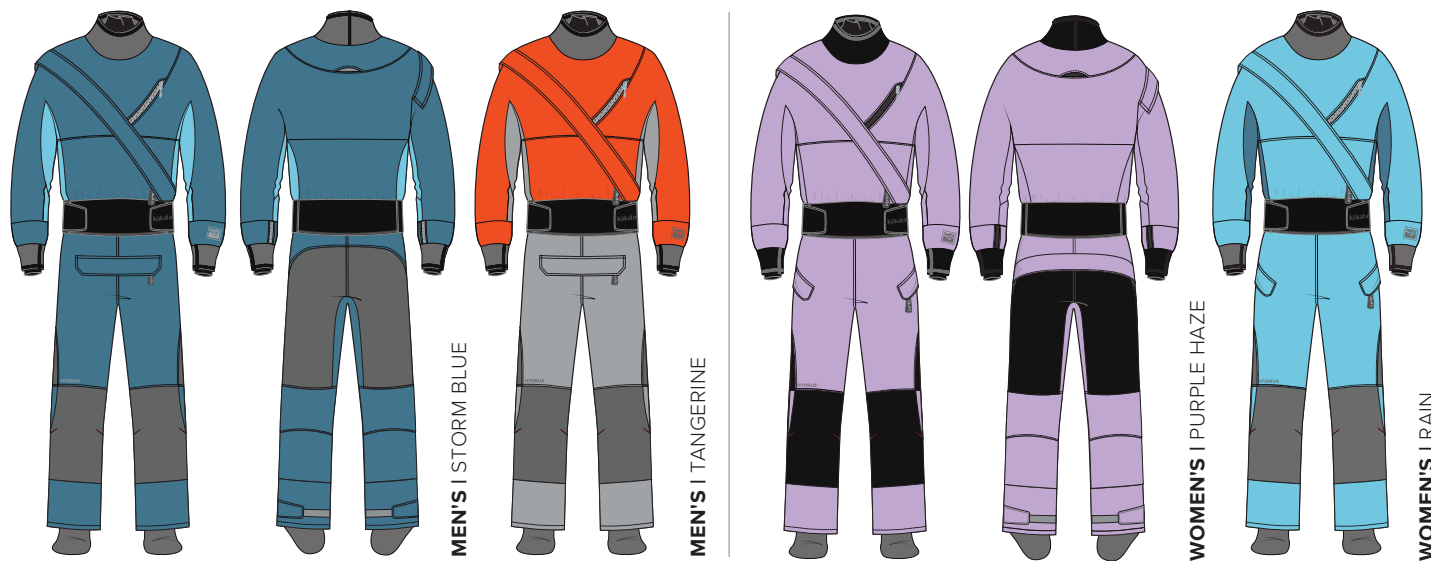
PULLOVER JACKET



FABRIC	GORE-TEX Paclite® technology
NECK	Adjustable, gusseted, coated Lycra® splash collar
WRIST	Adjustable, coated Lycra® splash cuffs
FEATURES	Rollup hood with reflective piping • Bungee drawcord waist • Self draining, zippered left sleeve pocket
COLORS	Tangerine, Ocean
SIZES	Unisex S-XL

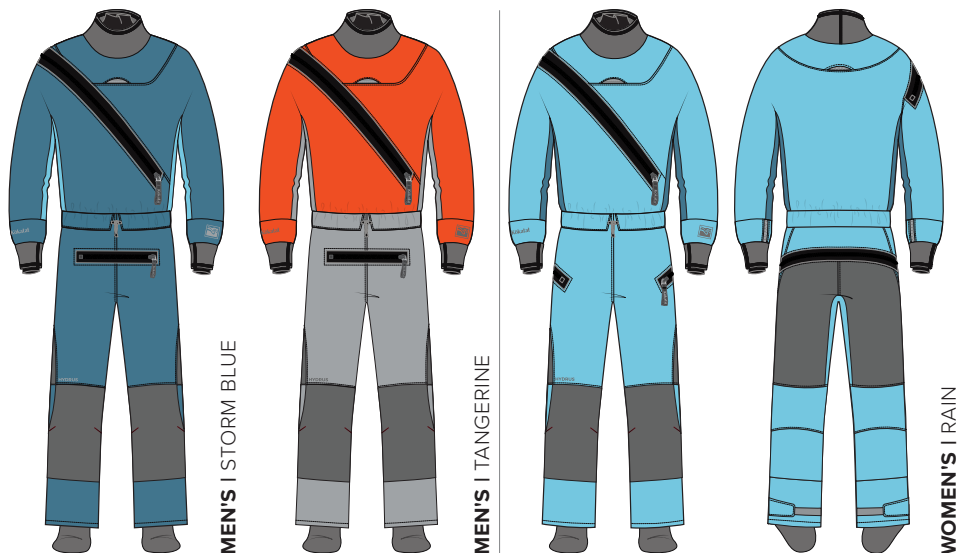
TECHNICAL SPECIFICATIONS

MERIDIAN DRY SUIT



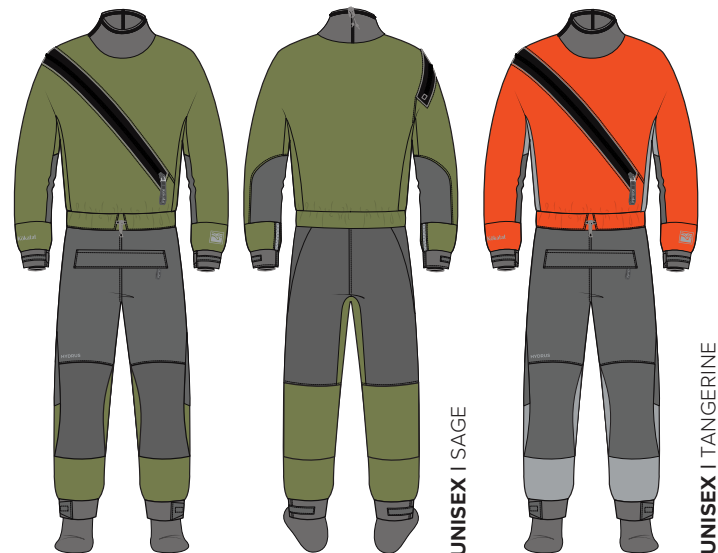
FABRIC	Hydrus 3.0 with 330D Hydrus Tough seat and knees
ENTRY & RELIEF	Nylon waterproof front entry zipper • Nylon waterproof front relief zipper for men, rear dropseat for women with improved placement for better fit and use
NECK	Latex gasket with neoprene punch through collar
WRIST	Latex gasket with neoprene punch through cuff
SOCKS	Hydrus 3.0
FEATURES	Updated pattern and style lines for improved fit and function. Dual adjustable overskirt with “hook & loop” compatible Ariaprene™ • Self-draining, zippered chest pocket with key lanyard • Adjustable bungee drawcord at waist • Every suit 100% fill tested; guaranteed to be dry
MEN'S COLORS	Storm Blue, Tangerine
WOMEN'S COLORS	Purple Haze, Rain
SIZES	Men's S-XXL, Wmn's S-L, XLS

SWIFT ENTRY DRY SUIT



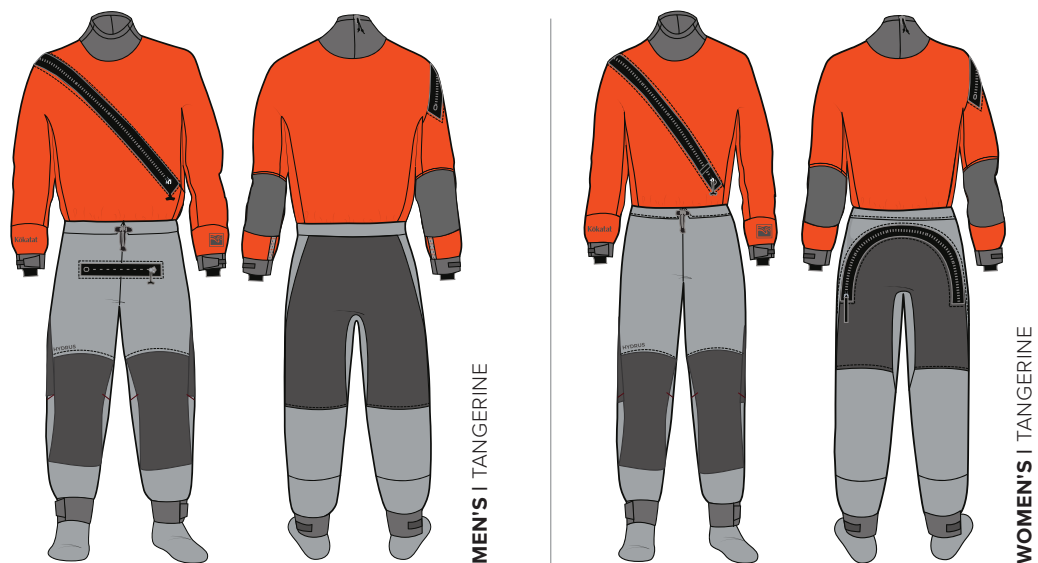
FABRIC	Hydrus 3.0 with 330D Hydrus Tough seat and knees
ENTRY & RELIEF	Nylon waterproof front entry zipper • Nylon waterproof front relief zipper for men, rear dropseat for women with improved placement for better fit and use
NECK	Latex gasket with neoprene punch through collar
WRIST	Latex gasket with neoprene punch through cuff
SOCKS	Hydrus 3.0
FEATURES	Adjustable bungee drawcord at waist • Every suit 100% fill tested; guaranteed to be dry.
CUSTOM OPTIONS	Base Model (no socks or relief zipper)
MEN'S COLORS	Storm Blue, Tangerine
WOMEN'S COLORS	Rain
SIZES	Men's S-XXL, LK, Women's S-L, XLS

SUPERNOVA ANGLER SEMI-DRY SUIT



FABRIC	Hydrus 3.0 with 330D Hydrus Tough lap, seat, knees and elbows
ENTRY & RELIEF	Nylon waterproof front entry zipper • Nylon waterproof front relief zipper
NECK	Neo Cinch Collar
WRIST	Latex gasket with adjustable "hook & loop" cuff
SOCKS	Hydrus 3.0 socks with gravel guard
FEATURES	330D Hydrus Tough integrated reinforcement on lap, seat, knees and elbows • Drawcord waist • Every suit 100% fill tested; guaranteed to be dry
COLORS	Sage, Tangerine
SIZES	Unisex S-XXL, LK

SUPERNOVA PADDLING SUIT



FABRIC

Hydrus 3.0 with 330D Hydrus Tough seat, knees and elbows

ENTRY & RELIEF

Nylon waterproof front entry zipper • Nylon waterproof front relief zipper for men, rear drop seat for women

NECK

Neo Cinch Collar

WRIST

Latex gasket with adjustable “hook & loop” cuff

SOCKS

Hydrus 3.0

FEATURES

Drawcord waist • Every suit 100% fill tested; guaranteed to be dry

MEN'S COLORS

Tangerine

WOMEN'S COLORS

Tangerine

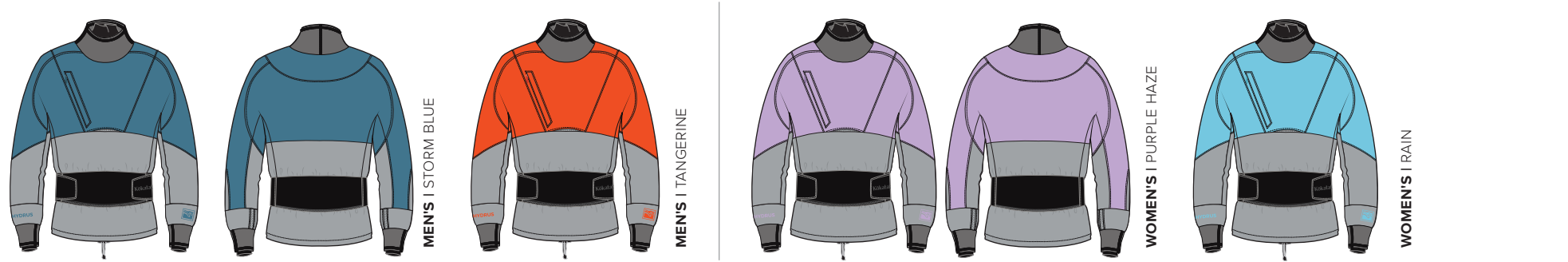
SIZES

Men's S-XXL, Wmn's S-L, XLS



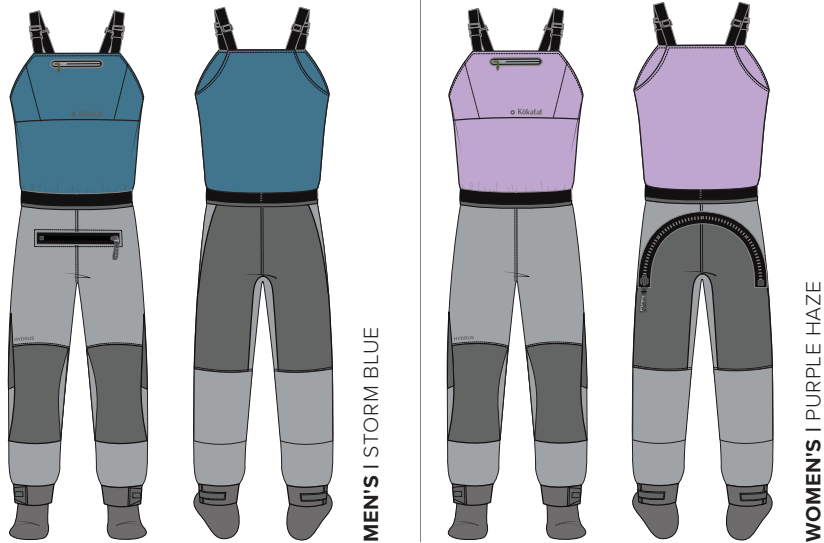
TECHNICAL SPECIFICATIONS

STOKE DRY TOP



FABRIC	Hydrus 3.0
NECK	Latex gasket with neoprene punch through collar
WRIST	Latex gasket with neoprene punch through cuff
FEATURES	Dual adjustable overskirt incorporates “hook & loop” compatible Ariaprene™ • Hydrus 2.5 inner skirt • Self-draining, zippered chest pocket with key lanyard
MEN'S COLORS	Storm Blue, Tangerine
WOMEN'S COLORS	Purple Haze, Rain
SIZES	Men’s S-XXL, Wmn’s S-L

WHIRLPOOL BIB



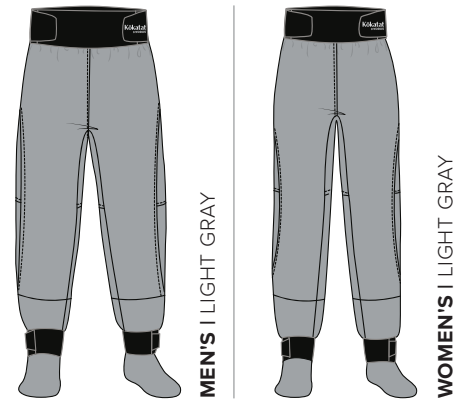
FABRIC	Hydrus 3.0 with 330D Hydrus Tough seat and knees
WAIST	Overskirt integrates with a dry top to make a dry system
ANKLE/SOCKS	Latex gasket with adjustable "hook & loop" cuff
FEATURES	Zippered, top loading chest pocket • Adjustable suspenders

MEN'S COLORS Storm Blue

WOMEN'S COLORS Purple Haze

SIZES Men's S-XXL, Wmn's S-L

TEMPEST PANT



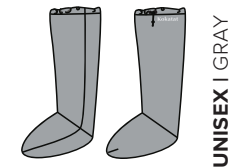
FABRIC	Hydrus 3.0
WAIST	Tall neoprene waistband with "hook & loop" tabs
ANKLE / SOCKS	Hydrus 3.0 socks

MEN'S COLOR Light Gray

WOMEN'S COLOR Light Gray

SIZES Men's S-XXL, Wmn's S-L

LAUNCH SOCK



FABRIC	Hydrus 3.0
---------------	------------

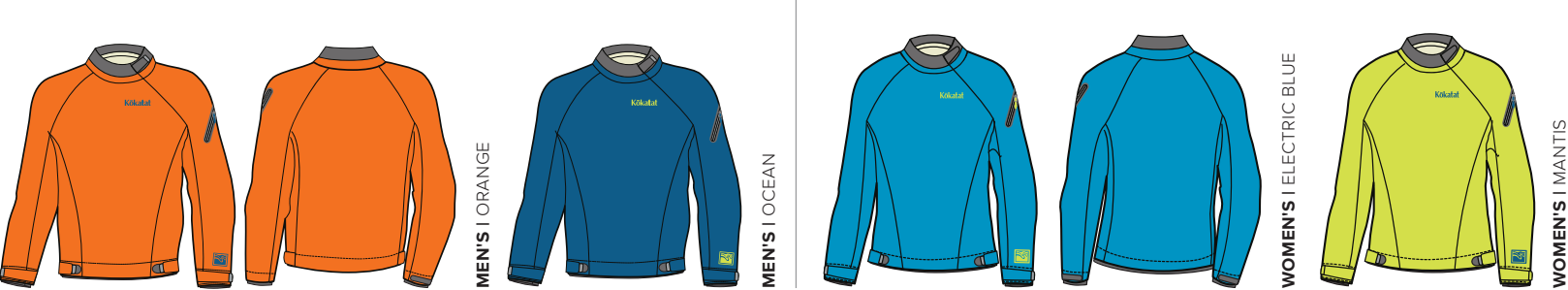
FEATURES Knee-high length • Adjustable bungee drawstring closure

COLOR Light Gray

SIZES Unisex XS-L

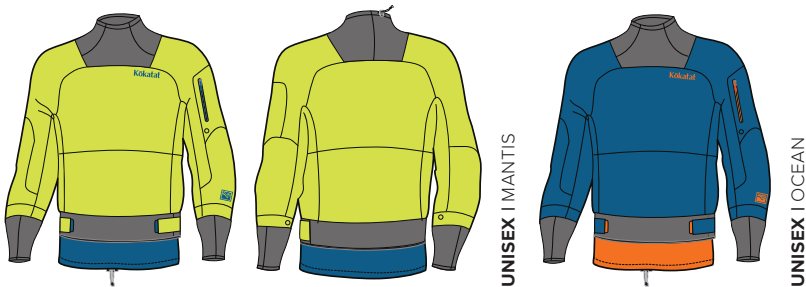
TECHNICAL SPECIFICATIONS

STANCE JACKET



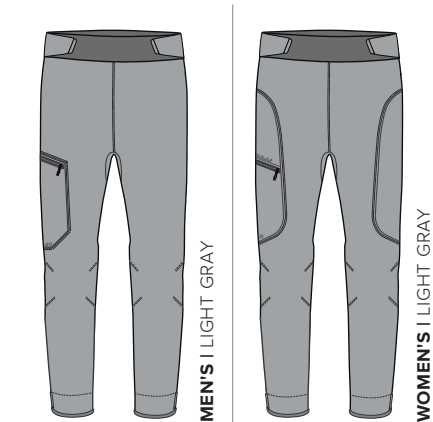
FABRIC	Hydrus 2.5
NECK	Adjustable, gusseted, neoprene splash collar
WRIST	Adjustable "hook & loop" neoprene splash cuff
FEATURES	Lightweight, waterproof breathable splash jacket • Printed layer on inner surface for added comfort • Dual adjustable neoprene waistband with "hook & loop" tabs
MEN'S COLORS	Orange, Ocean
WOMEN'S COLORS	Electric Blue, Mantis
SIZES	Men's S-XXL, Wmn's S-L

SESSION SEMI-DRY TOP



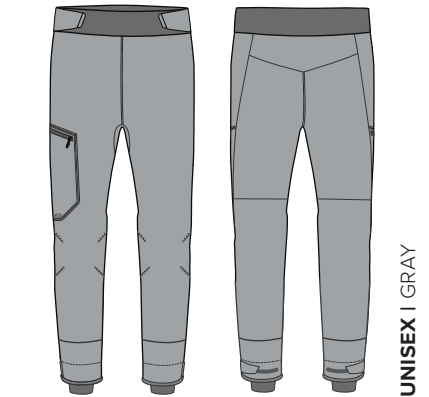
FABRIC	Hydrus 2.5
NECK	Neo Cinch Collar
WRIST	Latex gasket with neoprene punch through cuff
FEATURES	Lightweight performance Semi-Dry top • Printed layer on waterproof breathable fabric inner surface for added comfort • Double tunnel • Dual adjustable outer skirt incorporates “hook & loop” compatible neoprene • Inner skirt with bungee adjustment • Sleeve pocket
COLORS	Mantis, Ocean
SIZES	Unisex S-XXL

STANCE PANT



FABRIC	Hydrus 2.5
WAIST	Dual adjustable neoprene waistband with “hook & loop” tabs
ANKLE	Neoprene gaskets, with adjustable “hook & loop” neoprene over cuffs
MEN'S COLOR	Light Gray
WOMEN'S COLOR	Light Gray
SIZES	Men's S-XXL, Wmn's S-L

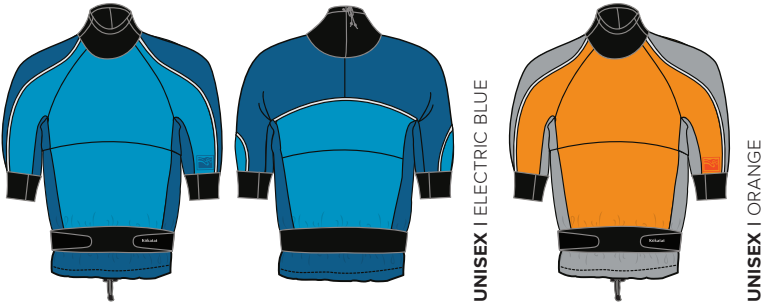
SESSION SEMI-DRY PANT



FABRIC	Hydrus 2.5
WAIST	Dual adjustable neoprene waistband with “hook & loop” tabs
ANKLE	Neoprene gaskets, with adjustable “hook & loop” neoprene over cuffs
COLOR	Light Gray
SIZES	Unisex S-XXL

TECHNICAL SPECIFICATIONS

BLAST SEMI-DRY SHORTY



FABRIC	Hydrus 2.5
NECK	Neo Cinch Collar
BICEP	Punch through coated Lycra® stretch cuff
FEATURES	Double tunnel • Dual adjustable outer skirt incorporates “hook & loop” compatible neoprene
COLORS	Electric Blue, Orange
SIZES	Unisex S-XL

TEMPEST JACKET



FABRIC	Hydrus 2.5
NECK	Neo Cinch Collar
WRIST	Latex gasket with adjustable “hook & loop” cuff
FEATURES	Double tunnel • Drawcord adjustable outer skirt
COLORS	Orange, Ocean
SIZES	Unisex S-XXXL

TECHNICAL SPECIFICATIONS

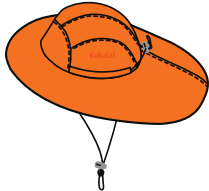
STORM CAG NEW COLOR



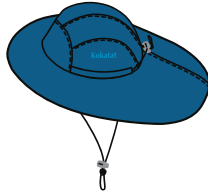
UNISEX | MANTIS

FABRIC	Hydrus 2.5
NECK	Hood
WRIST	Adjustable coated Lycra® splash cuff
FEATURES	Full coverage pullover with integrated adjustable shock cord rand • Oversize cut for full mobility over outerwear and PFD • Large self-draining front cargo and sleeve pocket with zippered closure • Pass-through behind cargo pocket for access to PFD • Large pile lined hand warmer pocket • Stuffs into hood for storage
COLORS	Mantis
SIZES	Unisex One size fits most (fits up to 21.5" x 38" cockpit, jacket size XL)

SEAWESTER



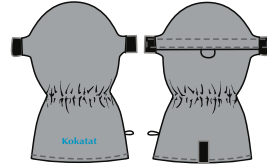
UNISEX | ORANGE



UNISEX | OCEAN

FABRIC	Hydrus 2.5
FEATURES	Mesh lining with Polartec® Power Dry® sweat band • Adjustable, cinch cord chin strap • Floating foam bill • Dark, non-glare surface under brim
COLORS	Orange, Ocean
SIZES	Unisex S-L

KAYAK MITT

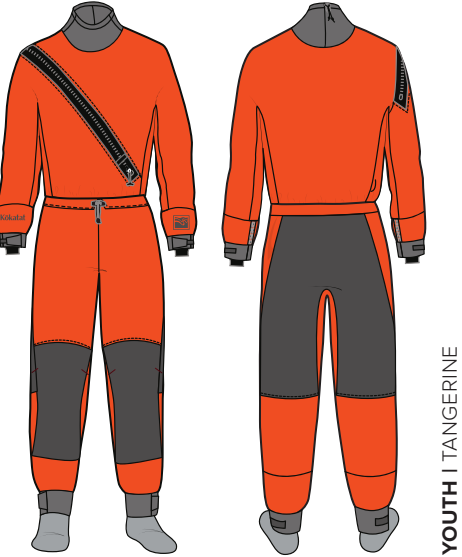


UNISEX | LIGHT GRAY

FABRIC	Hydrus 2.5
FEATURES	Pile-lined hand warmer mitts • Secures around paddle shaft with “hook & loop” closure
COLOR	Light Gray
SIZES	One size fits most

TECHNICAL SPECIFICATIONS

YOUTH SUPERNOVA SEMI-DRY SUIT



FABRIC Hydrus 3.0 with 330D Hydrus Tough seat and knees

ENTRY & RELIEF Nylon waterproof zipper

NECK Neo Cinch Collar

WRIST Latex gasket with adjustable “hook & loop” cuff

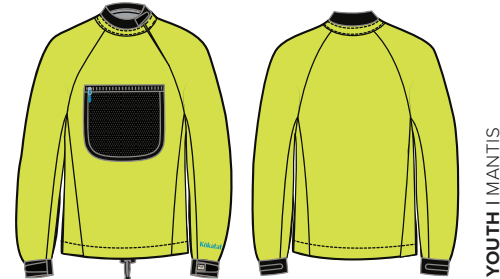
SOCKS Hydrus 3.0 socks

FEATURES Drawcord waist • Every suit 100% fill tested; guaranteed to be dry

YOUTH COLORS Tangerine

SIZES Youth M-XL

YOUTH SUPER BREEZE



FABRIC Hydrus 2.5

NECK Adjustable, gusseted coated Lycra® splash collar

WRIST Adjustable, coated Lycra® splash cuffs

FEATURES Zippered mesh chest pocket • Bungee drawcord waist

YOUTH COLORS Mantis

SIZES Youth S-L

YOUTH SQUIRT PANT



FABRIC Hydrus 2.5

WAIST Wide elastic drawstring waist

ANKLE Adjustable neoprene ankle cuffs

YOUTH COLOR Ocean

SIZES Youth S-L

TECHNICAL SPECIFICATIONS

HUSTLER



FABRIC	500D Cordura®
FOAM	Gaia® PVC-free and PE
ENTRY	Pullover
POCKETS	Large, zippered front pocket with internal organization
FEATURES	Sculpted foam panels that wrap around torso • Adjustable padded shoulder straps • Three side adjustments for a secure fit • Front lash tab • Quick release chest harness and O-ring, Tether/tow system ready • Sleeve for River Tow Tether or cow tail
CERTIFICATION	US Coast Guard, ISO (Europe)
UL COLORS	Mantis, Black
ISO COLORS	Mantis, Black
SIZES (BUOYANCY LBS / OZ)	XS/S (16/00), M/L (16/00), XL/XXL (16/00)

MAXIMUS CENTURION



FABRIC	500D Cordura®
FOAM	Gaia® PVC-free and PE
ENTRY	Side
POCKETS	Large, gusseted front pocket with internal organization
FEATURES	Wide, contoured neoprene shoulder straps for unsurpassed comfort and mobility • Dynamic Suspension System (DSS) allows unrestricted movement of front flotation panels • Front lash tab, strobe anchor on vest back • Quick release chest harness and O-ring, Tether/tow system ready • Stretch mesh sleeve for River Tow Tether or cow tail • Comes with Belly Pocket accessory
CERTIFICATION	US Coast Guard, Transport Canada, ISO (Europe)
UL COLORS	Red, Mantis, Black
ULC COLORS	Red
ISO COLORS	Mantis, Red, Black
SIZES (BUOYANCY LBS / OZ)	XS/S (16/05), M/L (17/05), XL/XXL (18/00)



TECHNICAL SPECIFICATIONS

GUIDE



FABRIC	500D Cordura®
FOAM	Gaia® PVC-free
ENTRY	Front
POCKETS	Zippered front pocket, electronics pocket and sleeve pocket behind zipper entry
FEATURES	Reflective tape • Lash tabs on front and back of vest • Articulated front shell and foam panels • Padded adjustable shoulders with Hypalon® grip panels • Eight adjustment points • Quick release chest harness and O-ring, tether/tow system ready
CERTIFICATION	US Coast Guard
UL COLORS	Glacier, Red
SIZES (BUOYANCY LBS / OZ)	S(16/5), M(16/5), L(16/6), XL(16/13)

HUCK 50' THROW BAG



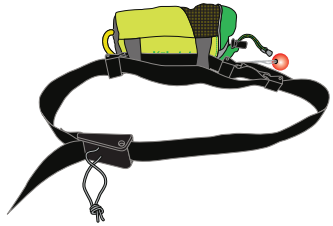
FABRIC	500D Cordura®
ROPE	¼" Polyethylene core, with a Polypropylene sheath (Max strength 1465 lbs)
FEATURES	Compact and ergonomic bag shape that fits flat against body • Mesh top for quick drying • Foam side panels for floatation • Reflective piping • Stiff bag opening for easy stuffing of rope
COLOR	Mantis
SIZES	50'

HUCK 70' THROW BAG



FABRIC	500D Cordura®
ROPE	¼" Spectra™ (Max strength 2500 lbs)
FEATURES	Compact and ergonomic bag shape that fits flat against body • Mesh top for quick drying • Foam side panels for floatation • Reflective piping • Stiff bag opening for easy stuffing of rope
COLOR	Red
SIZES	70'

HUCK 50' THROW BAG WITH BELT



RESCUE | MANTIS

FABRIC	500D Cordura®
ROPE	¼" Polyethylene core, with a Polypropylene sheath (Max strength 1465 lbs)
FEATURES	Whether you're wearing the pocket-happy MsFit Tour or the new Poseidon, Alec Bloyd-Peskin takes us through what you should put in your pockets. ompact and ergonomic bag shape that fits flat against body • Mesh top for quick drying • Foam side panels for floatation • Reflective piping • Stiff bag opening for easy stuffing of rope • Quick release belt with adjustable quick release throw bag attachment point so you can wear throw bag on the back of your waist or in your lap
COLOR	Mantis
SIZE	50'

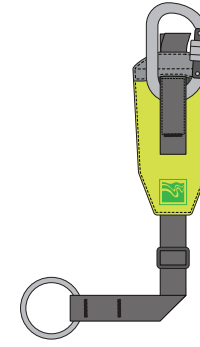
HUCK THROW BAG BELT



RESCUE | BLACK

FABRIC	Nylon
FEATURES	Compatible with Huck 50' and 70' throw bags • Quick release belt with adjustable quick release throw bag attachment point so you can wear throw bag on the back of your waist or in your lap
COLOR	Black

RIVER TOW TETHER

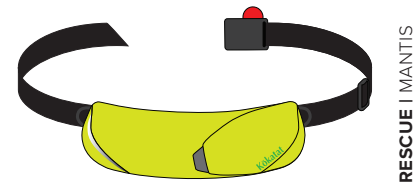


RESCUE | MANTIS

FABRIC	500D Cordura®
FEATURES	5' webbing • Locking carabiner
COLOR	Mantis

TECHNICAL SPECIFICATIONS

SLIPSTREAM WAIST TOW SYSTEM



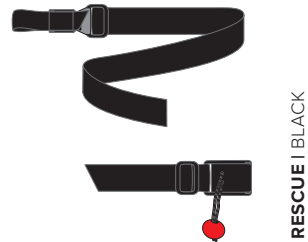
FABRIC 210D high tenacity ripstop nylon

ROPE 3/16" Dyneema® core (Max strength 525lbs)

FEATURES 50' rope with adjustable two-stage deployment • Quick release rope deployment • Nylon carabiner with float • Rope divider for easy two stage packing • Quick release waist belt • Reflective accent

COLOR Mantis

NEPTUNE/POSEIDON QUICK RELEASE BELT



FABRIC Nylon

ROPE Attaches to Neptune and Poseidon for use with Touring Tow Tether • Includes Tow tether quick release buckle

COLOR Black

REFLECTIVE TAPE



FABRIC SOLAS™ reflective tape

FEATURES Fits all Kokatat PFDs

COLOR Reflective



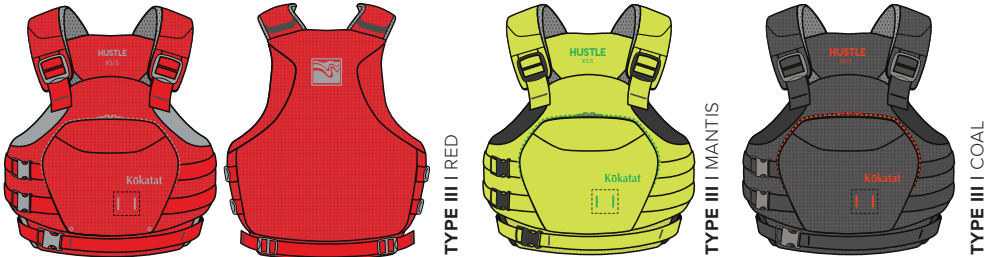
TECHNICAL SPECIFICATIONS

WKNDR



FABRIC	210D high tenacity ripstop nylon
FOAM	Gaia® PVC-free and PE
ENTRY	Front
POCKETS	4 pockets (2 zippered, 2 hand warmer)
FEATURES	Easy front entry zipper • Thin foam full back panel for seat back comfort • Sculpted foam panels that wrap around torso • Adjustable padded foam shoulder straps • 2 side adjustments for secure fit • Cozy hand warmer pockets
CERTIFICATION	Harmonized (US Coast Guard & Transport Canada), ISO (Europe)
HARMONIZED UL/ULC COLORS	Mantis, Red, Coal
ISO COLORS	Mantis, Red, Coal
SIZES (BUOYANCY LBS / OZ)	XS/S (16/00), M/L (16/00), XL/XXL (16/00)

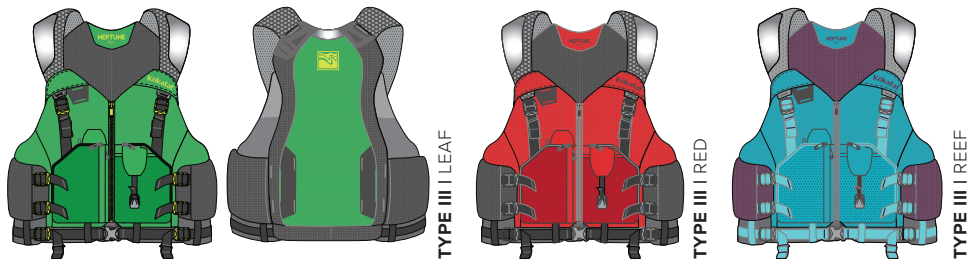
HUSTLE



FABRIC	210D high tenacity ripstop nylon
FOAM	Gaia® PVC-free and PE
ENTRY	Side
POCKETS	Large, zippered front pocket with internal organization
FEATURES	Sculpted foam panels that wrap around torso • Adjustable padded shoulder straps • Three side adjustments for a secure fit • Front lash tab
CERTIFICATION	Harmonized (US Coast Guard & Transport Canada), ISO (Europe)
HARMONIZED UL/ULC COLORS	Red, Mantis, Coal
ISO COLORS	Red, Mantis, Coal
SIZES (BUOYANCY LBS / OZ)	XS/S (16/00), M/L (16/00), XL/XXL (16/00)

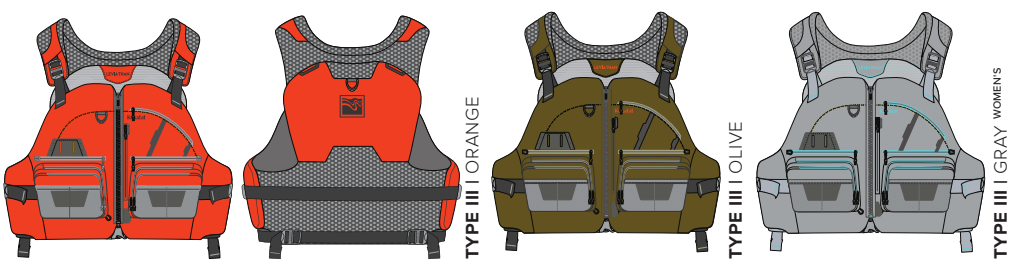
TECHNICAL SPECIFICATIONS

NEPTUNE



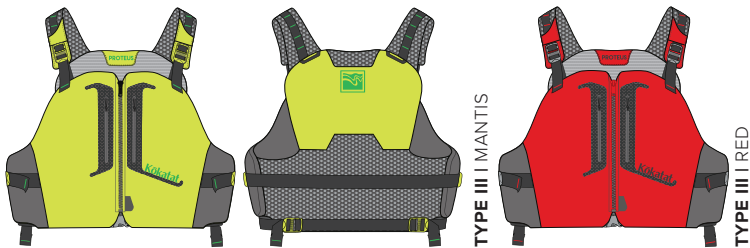
FABRIC	210D high tenacity ripstop nylon
FOAM	Gaia® PVC-free
ENTRY	Front
POCKETS	5 pockets (including dedicated pockets for VHF radio and folding knife)
FEATURES	Front and center webbing adjustments • Articulated shell and foam panels • Reflective tape • Hydration sleeve • Attachment points for fixed rescue knife and strobe light • Compatible with Tributary Hydration system and Tactic Pack • Compatible with Neptune/Poseidon Quick Release Belt
CERTIFICATION	Harmonized (US Coast Guard, Transport Canada), ISO (Europe)
HARMONIZED UL/ULC COLORS	Leaf, Red, Reef
ISO COLORS	Leaf, Red, Reef
SIZES (BUOYANCY LBS / OZ)	XS/S (16/00), M/L (16/00), XL/XXL (16/00)

LEVIATHAN



FABRIC	210D high tenacity ripstop nylon
FOAM	Gaia® PVC-free
ENTRY	Front
POCKETS	14 pockets (8 zippered, 4 mesh, 2 hand warmers)
FEATURES	Internal foam contouring for trim, relaxed fit • Articulated design enhancing comfort • Hand warmer pockets • Ultra-light, quick drying Ariaprene™ (non-toxic, hypo-allergenic) mesh back and shoulders complements high back seats
CERTIFICATION	Harmonized (US Coast Guard, Transport Canada), ISO (Europe)
HARMONIZED UL/ULC COLORS	Orange, Olive, Gray (Women's)
ISO COLORS	Olive
SIZES (BUOYANCY LBS / OZ)	XS/S (16/00), M/L (16/00), XL/XXL (16/00)

PROTEUS



FABRIC	100D stretch polyester with 210D high tenacity nylon in high wear areas
FOAM	Gaia® PVC-free
ENTRY	Front
POCKETS	4 pockets (2 zippered, 2 hand warmer)
FEATURES	Internal foam contouring for trim, relaxed fit • Articulated design enhancing comfort • Cozy hand warmer pockets • Integrated mesh panel back complements high back seats • Adjustable padded shoulder straps
CERTIFICATION	Harmonized (US Coast Guard, Transport Canada), ISO (Europe)
HARMONIZED UL/ULC COLORS	Mantis, Red
ISO COLORS	Mantis, Red
SIZES (BUOYANCY LBS / OZ)	XS/S (16/00), M/L (16/00), XL/XXL(16/00)

NAIAD



FABRIC	100D stretch polyester with 210D high tenacity nylon in high wear areas
FOAM	Gaia® PVC-free
ENTRY	Front
POCKETS	5 pockets (3 zippered, 2 hand warmer)
FEATURES	Women's design featuring internal foam contouring for liberated fit • Ultra-light, quick drying Ariaprene™ (non-toxic, hypo-allergenic) mesh back and shoulders complements high back seats • Articulated design enhancing comfort • Cozy hand warmer pockets
CERTIFICATION	Harmonized (US Coast Guard, Transport Canada), ISO (Europe)
HARMONIZED UL/ULC COLORS	Purple, Reef
ISO COLORS	Purple, Reef
SIZES (BUOYANCY LBS / OZ)	XS/S (16/00), M/L (16/00), XL/XXL(16/00)

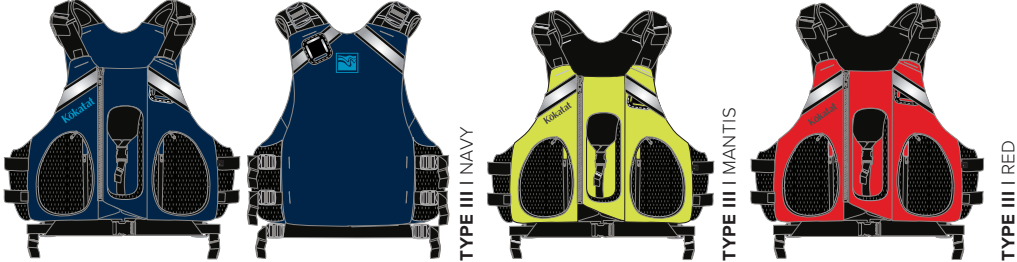
TECHNICAL SPECIFICATIONS

MsFIT TOUR



FABRIC	500D Cordura®
FOAM	Gaia® PVC-free
ENTRY	Front
POCKETS	Two duplex front pockets, electronics pocket, and sleeve pocket behind entry zipper
FEATURES	Articulated front shell and foam panels • Padded adjustable shoulders with Hypalon® grip panels • Front and back lash tabs • Reflective tape • Eight adjustment points
CERTIFICATION	US Coast Guard, Transport Canada, ISO (Europe)
UL COLORS	Mantis, Glacier
ULC COLORS	Glacier
ISO COLORS	Mantis, Glacier
SIZES (BUOYANCY LBS / OZ)	S(16/5), M(16/5), L(16/6), XL(16/13)

OUTFIT TOUR



FABRIC	500D Cordura®
FOAM	Gaia® PVC-free
ENTRY	Front
POCKETS	Two duplex front pockets, electronics pocket, and sleeve pocket behind entry zipper
FEATURES	Articulated front shell and foam panels • Padded adjustable shoulders with Hypalon® grip panels • Front and back lash tabs • Reflective tape • Eight adjustment points
CERTIFICATION	US Coast Guard
UL COLORS	Navy, Mantis, Red
SIZES (BUOYANCY LBS / OZ)	S(16/05), M(16/05), L(16/10), XL & XXL(17/00) *XXL in Mantis only

TECHNICAL SPECIFICATIONS

TRIBUTARY



FABRIC 210D High tenacity ripstop nylon

FEATURES Pack attaches to all Kokatat life vests • Hydrapak® Elite 1.5 liter reversible reservoir (PVC + BPA free) • “Plug-n-play” connector with 36” drink tube • Zippered stash pocket for essentials

COLOR Mantis

HYDRAPAK® ELITE 1.5 LITER RESERVOIR

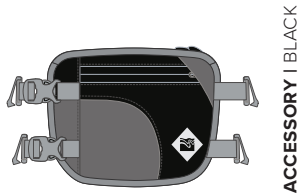


FABRIC PVC & BPA free

FEATURES “Plug-n-play” connector w/36” drink tube • Reversible reservoir makes cleaning easy • Wide slide top opening allows for fast filling and secure seal

SIZE 1.5 Liter

BELLY POCKET



FABRIC 500D Cordura®

FEATURES Pocket attaches to Maximus and Maximus Centurion for added storage • Multiple pockets for organizing essentials • Fits most VHF radios • Quick release side attachment points allow you to access PFD shoulder adjustment and zipper

COLOR Black

TECHNICAL SPECIFICATIONS

WOOLCORE LONG SLEEVE SHIRT



FABRIC 50% Merino wool 50% polyester (4.48oz/yd², 152g/m²)

LAYER Next to skin base layer

FEATURES Warmth and natural anti-bacterial characteristics of wool • Superior wicking, durability and dry time of polyester • Fabric cut and sewn in California • Paddling specific patterns

MEN'S COLORS Heather Charcoal

WOMEN'S COLORS Heather Charcoal

SIZES Men's S-XXL, Wmn's S-L

WOOLCORE PANT



FABRIC 50% Merino wool 50% polyester (4.48oz/yd², 152g/m²)

LAYER Next to skin base layer

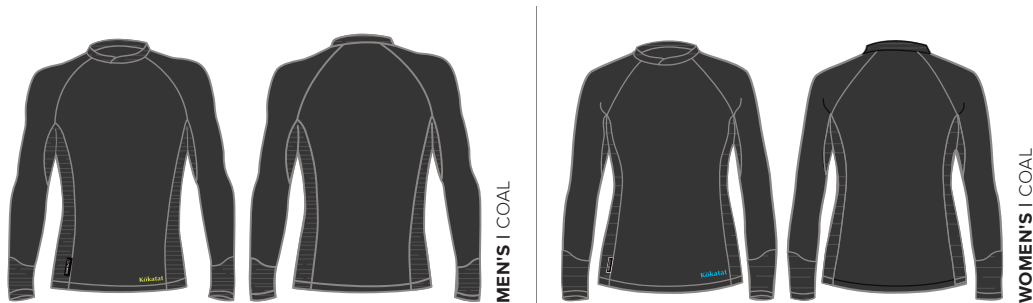
FEATURES Warmth and natural anti-bacterial characteristics of wool • Superior wicking, durability and dry time of polyester • Fabric cut and sewn in California • Paddling specific patterns

MEN'S COLORS Heather Charcoal

WOMEN'S COLORS Heather Charcoal

SIZES Men's S-XXL, Wmn's S-L

OUTERCORE LONG SLEEVE SHIRT



FABRIC

Main: 4-way stretch 90% polyester 10% spandex (5.2oz/yd², 176g/m²)
Contrast Grid: 4-way stretch 92% polyester 8% spandex (4oz/yd², 136g/m²)

LAYER

Next to skin or over base layer

FEATURES

Heavyweight recycled stretch polyester • Jersey face enables smooth layering of garments and durability • Velour back provides warmth and superior moisture transportation • Articulated body mapping with lighter grid fabric in the underarm, cuffs and neck for comfort and unrestricted movement • Flat-stitched seams • Paddling specific patterns

MEN'S COLORS

Coal

WOMEN'S COLORS

Coal

SIZES

Men's S-XXL, Wmn's S-XL

OUTERCORE PANT



FABRIC

Main: 4-way stretch 90% polyester 10% spandex (5.2oz/yd², 176g/m²) Contrast Grid: 4-way stretch 92% polyester 8% spandex (4oz/yd², 136g/m²)

LAYER

Next to skin or over base layer

FEATURES

Heavyweight recycled stretch polyester • Jersey face enables smooth layering of garments and durability • Velour back provides warmth and superior moisture transportation • Articulated body mapping with lighter grid fabric in cuffs for comfort and unrestricted movement • Flat-stitched seams • Paddling specific patterns

MEN'S COLORS

Coal

WOMEN'S COLORS

Coal

SIZES

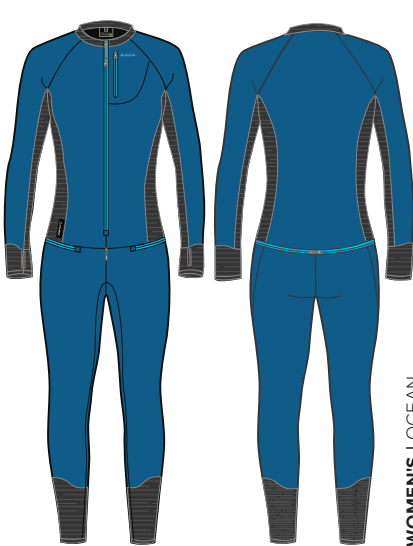
Men's S-XL, Wmn's S-XL

TECHNICAL SPECIFICATIONS

OUTERCORE HABANERO LINER



MEN'S | COAL



WOMEN'S | OCEAN

INSULATION

FABRIC

Main: 4-way stretch 90% polyester 10% spandex (5.2oz/yd², 176g/m²) Contrast Grid: 4-way stretch 92% polyester 8% spandex (4oz/yd², 136g/m²)

LAYER

Next to skin or over base layer

FEATURES

Heavyweight recycled stretch polyester • Jersey face enables smooth layering of garments and durability • Velour back provides warmth and superior moisture transportation • Front relief and rear relief for both men's and women's models • Articulated body mapping with lighter grid fabric in the underarm, cuffs and neck for comfort and unrestricted movement • Flat-stitched seams • Zippered chest pocket • Paddling specific patterns • Thumb loops

MEN'S COLORS

Coal

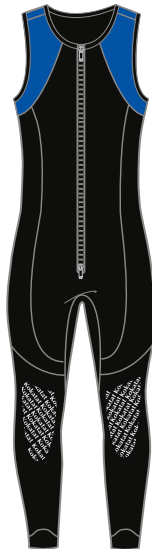
WOMEN'S COLORS

Ocean

SIZES

Men's S-XXL, Wmn's S-L, XLS

NEOZIP JOHN & JANE



MEN'S | BLACK



WOMEN'S | BLACK

WET INSULATION

FABRIC

3mm double lined neoprene

LAYER

Next to skin or over base layer

FEATURES

Durable front entry zipper • Shoulder panels color coded by size • Non-skid knee reinforcement • Two-way zipper (NeoZip John) • Relief zipper (NeoZip Jane)

MEN'S COLORS

Black

WOMEN'S COLORS

Black

SIZES

Men's S-XXL, Wmn's S-L, XLS

SURFSKIN SKULL CAP



FABRIC Lycra® outer layer laminated to a cozy polyester fleece lining

LAYER Next to skin

FEATURES Low profile, strapless design

COLOR Black

SIZES S, L

SURFSKIN BALACLAVA



FABRIC Lycra® outer layer laminated to a cozy polyester fleece lining

LAYER Next to skin

FEATURES Full coverage • Pile chin

COLOR Black

SIZES S, L

TECHNICAL SPECIFICATIONS

NOMAD



FABRIC 3mm double lined neoprene

SOLE Medium weight “traction” sole

FEATURES Glued blind-stitch construction • Stiffening footbed insert • Waterproof, breathable knee high gaiter • Vulcanized rubber toe cap and heel counter

COLOR Black

SIZES US 6-13 (whole sizes), EU 38-47.5

SEEKER



FABRIC 3mm double lined neoprene

SOLE Ultra-light vulvanized ruber sole

FEATURES Glued blind-stitch construction • One hand adjustable hidden lacing system • Vulcanized rubber toe cap and heel counter

COLOR Black

SIZES US 6-13 (whole sizes), EU 38-47.5

PORTAGE



FABRIC 3mm double lined neoprene

SOLE Medium weight “traction” sole

FEATURES Glued blind-stitch construction • One hand adjustable hidden lacing system • Vulcanized rubber toe cap and heel counter

COLOR Blue

SIZES US 6-13 (whole sizes), EU 38-47.5

SCOUT



FABRIC 3mm double lined neoprene

SOLE Medium weight “traction” sole

FEATURES Glued blind-stitch construction • “Hook & loop” instep adjustment strap • Vulcanized rubber toe cap and heel counter

COLOR Black

SIZES US 6-13 (whole sizes), EU 38-47.5

LIGHTWEIGHT GLOVE



UNISEX | GRAY

FABRIC Nylon spandex upper, double layered Amara synthetic suede palm

FEATURES Lightweight fingerless design • “Hook & loop” adjustable wrist closure

COLOR Gray

SIZES XS-XXL

KOZEE GLOVE



UNISEX | BLACK

FABRIC 1mm Smoothskin neoprene back, 0.5mm neoprene palm

FEATURES Grip dots on palm

COLOR Black

SIZES XS-XXL

INFERNO MITT



UNISEX | BLACK

FABRIC Thermo lined 3mm smoothskin neoprene

FEATURES Plush inner layer on back of hand • Glued blind-stitch construction • Pre-curved for effort free grip on paddle • Reinforced palm

COLOR Black

SIZES XS-XXL

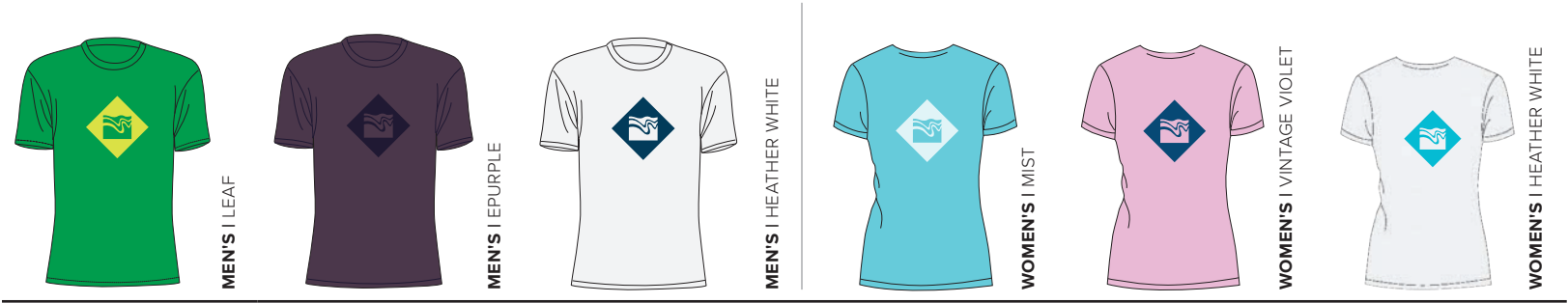
TECHNICAL SPECIFICATIONS

INTO THE WATER T-SHIRT



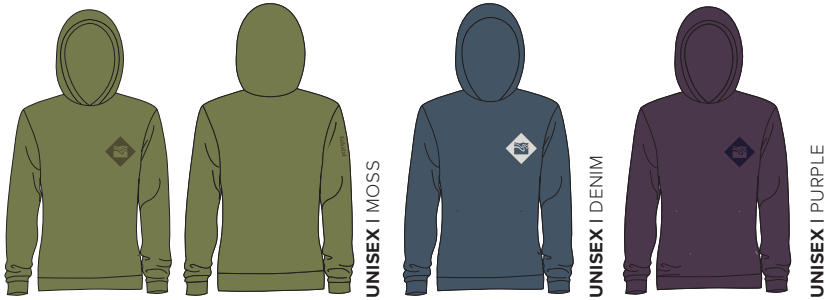
FABRIC	Men's: 65% Poly 35% Combed Ring-Spun Cotton Women's: Poly/Cotton Crew - 60% Poly 40% Combed Ring-Spun Cotton
MEN'S COLORS	Mustard Stout, Denim
WOMEN'S COLORS	Navy, Mist
SIZES	Men's S-XXL, Women's S-XL

KOKATAT T-SHIRT



FABRIC	Tri-Blend Jersey - 50% Poly 25% Combed Ring-Spun Cotton 25% Rayon
MEN'S COLORS	Leaf, Purple, Heather White
WOMEN'S COLORS	Mist, Vintage Violet, Heather White
SIZES	Men's S-XXL, Women's S-XL

HUSTLE HOODED-T



FABRIC Tri-Blend Jersey

COLORS Moss, Denim, Purple

SIZES XS-XXL

BLUE PUMA HAT



FABRIC Poly/cotton

COLOR Navy

SIZES Snapback - One size fits most

INTO THE WATER FLAT BRIM HAT



FABRIC Cotton twill

COLOR Gray

SIZES Leather strap - One size fits most

INTO THE WATER HOODY



FABRIC 7.8-ounce, 50/50 Cotton/Poly fleece

MEN'S COLORS Charcoal

WOMEN'S COLORS Light Gray

SIZES Men's S-XXL, Women's S-XL

HUSTLE HAT



FABRIC Cotton twill

COLOR Navy

SIZES Adjustable clip band - One size fits most

TRUCKER HAT



FABRIC Cotton twill & mesh

COLOR Black

SIZES Snapback - One size fits most

SIZING & MEASUREMENTS



CHEST | MEASUREMENT



WAIST | MEASUREMENT



GIRTH | MEASUREMENT



HIP | MEASUREMENT



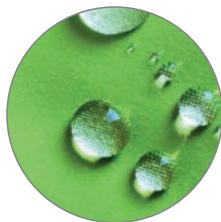
INSEAM | MEASUREMENT



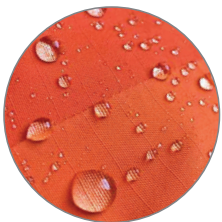
SLEEVE | MEASUREMENT

CHEST	Measure at the widest point. This may be at the nipple area or under the armpits across the upper chest. Use the larger of the two measurements.
WAIST	Measure around the narrowest part of your waist.
GIRTH	Measure from the base of the neck on top of the shoulder, Down the front, through the crotch and up the back to the starting point on top of the shoulder.
HIP	Take this measurement from the side to ensure the correct placement. Measure around the hip at the widest point of the buttocks.
INSEAM	Stand with legs straight and feet 12 inches apart. Place tape snug against the top of the crotch. Stretch the tape straight down the leg to the ankle bone.
ARM	Hold bent arm parallel to floor with hand in front of nose. Measure from the spine at the base of the neck, out around elbow and back to the wrist bone.

FABRIC



GORE-TEX PRO | FABRIC



KOKATAT® | FABRIC



INSULATION | FABRIC



WARRANTY | KOKATAT®

GORE-TEX PRO	Waterproof Extremely Rugged Breathable
KOKATAT	Proprietary Waterproof Breathable • Hydrus 3.0 • Hydrus 2.5 • Hydrus Tough
INSULATION	WoolCore • OuterCore

WARRANTY

All Kokatat products are fully guaranteed to the original owner against defects in materials and workmanship for the reasonable life of the item. Products found to be defective will be repaired or replaced at Kokatat's option. Repairs due to normal wear and tear, accident, abuse, etc., will be made for a reasonable charge. Latex gaskets are not covered by the Kokatat warranty. Kokatat specifically disavows any other representative warranty or liability relative to the condition or use of the product.

WOMEN

WOMEN	S	M	L	XL short	XL*
size	6-8	10-12	14-16	18-20	18-20
bust	34-37	37-40	40-44	45-49	43-46
waist	27-30	30-33	33-39	40-43	37-40
girth	59-61	62-65	65-67	66-68	n/a
hips	36-39	39-42	42-45	48-52	45-48
inseam	27-28	28-29	29-30	28-29	29-30
sleeve	29-30	31-32	32-33	32-33	33-34
height	5' to 5'4"	5'4" to 5'8"	5'6" to 6'	5'4" to 5'8"	5'6" to 6'
weight	100-130	130-160	160-180	180-200	180-200

* women's XL not available in suits

UNISEX

UNISEX	XS*	S	M	L	XL	XXL	XXXL*	L king
chest	32-35	35-38	38-41	41-44	44-48	48-53	56-58	53-57
waist	25-28	28-31	31-34	34-37	37-41	41-45	46-48	45-55
girth	n/a	59-63	63-67	68-72	72-76	76-80	n/a	72-76
hips	n/a	36-39	39-41	41-44	44-47	47-50	n/a	50-52
inseam	n/a	29-30	30-31	31-32	32-33	32-33	n/a	30-31
sleeve	30	30-32	32-34	34-35	35-36	36-37	37	34-35
height	5' to 5'4"	5'2" to 5'6"	5'6" to 6'	5'10" to 6'2"	6' to 6'4"	6' to 6'6"	6'-6'4"	5'10-6'2"
weight	100-125	115-140	140-175	175-200	200-240	220-260	220-260	240-280

* XS only available in the Tropos Super Breeze, XXXL only in the Tempest jacket.

YOUTH

YOUTH	S	M	L	XL*
size	6-8	10-12	14-16	18-20
chest	26-28	28-30	32-34	34-36
waist	22-24	24-26	26-28	30-32
hips	26-28	30-32	34-36	36-38
inseam	22-24	24-26	26-28	28-30
sleeve	24-26	26-28	28-30	30-32
height	4'2"-4'6"	4'8"-5'	5'-5'4"	5'2"-5'6"

*For youth sizing within XL parameters (except suits) any jacket or pant in our unisex size S will fit.

LIFE VEST

CHEST DIMENSIONS	S	M	L	XL	XXL
MsFIT Tour, Guide	34-38	38-42	42-46	45-49	n/a
OutFIT Tour	36-40	40-44	44-48	48-52	50-54
CHEST DIMENSIONS	XS/S	M/L	XL/XXL		
WKNDR	32-38	40-46	49-55		
Hustle, HustleR	32-38	40-46	49-55		
Maximus Centurion	32-38	40-46	49-55		
Neptune, Proteus, Naiad, Leviathan	32-38	40-46	49-55		

ACCESSORIES

HAT SIZES	
S	L
≤ 7 3/8"	≥ 7 1/2"

GLOVES		
SIZE	hand circumf.	hand length
XS	7"	6 1/2"
S	8"	7"
M	9"	7 1/2"
L	10"	7 3/4"
XL	11"	8"
XXL	12"	8 1/2"

FOOTWEAR	
US	European
6	38
7	39
8	41
9	43
10	43.5
11	44.5
12	46
13	47.5

GASKETS & SOCKS

NECK GASKETS	S	L
unisex garments	S	M-XXL
women's garments	S	M-XL, XLS
WRIST GASKETS	S	L
unisex garments	S	M-XXL
women's garments	S-M	L-XL,XLS

SUIT SOCK SIZES			
SOCK SIZE	MEN'S SHOE SIZE	WOMEN'S SHOE SIZE	SUIT SIZE
XS	3 - 5	5 - 7	youth M
S	6 - 8	8 - 10	S, WS - XLS, youth L, XL
M	9 - 11	11 - 12	M - XL, LK
L	12 - 15	13 - 14	XXL

GORE-TEX PRO COLLECTION



MERIDIAN DRY SUIT

M ● ● ● ● W ● ● ●



ICON DRY SUIT

M ● ● ● ● W ● ● ●



IDOL DRY SUIT

W ● ● ● ● M ● ● ●



ODYSSEY DRY SUIT

M ● ● ● ● W ● ● ●



LEGACY DRY SUIT

M ● ● ● ● W ● ● ●



SUPERNOVA ANGLER SEMI-DRY SUIT

U ● ● ● ●



OM DRY TOP

M ● ● ● ● W ● ● ●

HYDRUS 2.5 COLLECTION



BLAST SEMI-DRY SHORTY

U ● ● ● ●



TEMPEST JACKET

U ● ● ● ●



SEAWESTER

U ● ● ● ●



STORM CAG

U ● ● ● ●



SESSION SEMI-DRY JACKET

U ● ● ● ●



SESSION SEMI-DRY PANT

U ● ● ● ●



STANCE JACKET

M ● ● ● ● W ● ● ●



STANCE PANT

U ● ● ● ●

LIFE VEST COLLECTION



HUSTLER

U ● ● ● ●



MAXIMUS CENTURION

U ● ● ● ●



GUIDE

U ● ● ● ●



WKNDR

U ● ● ● ●



HUSTLE

U ● ● ● ●



NEPTUNE

U ● ● ● ●



NAIAD

W ● ● ● ●



LEVIATHAN

U ● ● ● ●



PROTEUS

U ● ● ● ●



MSFT TOUR

U ● ● ● ●



OUTFIT TOUR

U ● ● ● ●

LIFE VEST ACCESSORIES



HUCK 50' THROW BAG WITH BELT



HUCK 50' THROW BAG



HUCK 70' THROW BAG



THROW BAG BELT



SLIPSTREAM



RIVER TOW TETHER



NEPTUNE/POSEIDON QUICK RELEASE BELT



SOLAS REFLECTIVE TAPE



HYDRAPAK® 1.5 LITER RESERVOIR



TRIBUTARY HYDRATION SYSTEM



BELLY POCKET

GORE-TEX PACLITE® COLLECTION



PADDLING JACKET
M ● ● ● ● W ● ● ● ●



PULLOVER JACKET
U ● ● ● ●

HYDRUS 2.5 YOUTH COLLECTION



SUPERNOVA SEMI-DRY SUIT
Y ● ● ● ●



SUPER BREEZE JACKET
Y ● ● ● ●



SQUIRT PANT
Y ● ● ● ●

WET INSULATION COLLECTION



SURFSKIN BALACLAVA



SURFSKIN SKULL CAP

LIFESTYLE COLLECTION



KOKATAT T-SHIRT
M ● ● ● ● W ● ● ● ●



INTO THE WATER T-SHIRT
M ● ● ● ● W ● ● ● ●



INTO THE WATER ZIP HOODY
M ● ● ● ● W ● ● ● ●



HUSTLE HOODED T
U ● ● ● ●



HUSTLE HAT
U ● ● ● ●



BLUE PUMA HAT
U ● ● ● ●



INTO THE WATER FLAT BRIM
U ● ● ● ●



LOGO HAT
U ● ● ● ●

HYDRUS 3.0 COLLECTION



MERIDIAN DRY SUIT
M ● ● ● ● W ● ● ● ●



SUPERNOVA ANGLER SEMI-DRY SUIT
U ● ● ● ●



SWIFT ENTRY DRY SUIT
W ● ● ● ● M ● ● ● ●



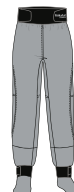
SUPERNOVA PADDLING SUIT
M ● ● ● ● W ● ● ● ●



STOKE DRY TOP
M ● ● ● ● W ● ● ● ●



WHIRLPOOL BIB
W ● ● ● ● M ● ● ● ●



TEMPEST PANT
M ● ● ● ● W ● ● ● ●



LAUNCH SOCK
U ● ● ● ●

INSULATION COLLECTION



WOOLCORE LONGSLEEVE SHIRT
M ● ● ● ● W ● ● ● ●



OUTCORE LONG SLEEVE SHIRT
M ● ● ● ● W ● ● ● ●



WOOLCORE PANT
M ● ● ● ● W ● ● ● ●



OUTCORE PANT
M ● ● ● ● W ● ● ● ●



MEN'S HABANERO LINER
M ● ● ● ●



WOMEN'S HABANERO LINER
W ● ● ● ●

OUTFITTER COLLECTION



NEO ZIP LONG JOHN



NEO ZIP LONG JANE

FOOTWEAR & GLOVES



LIGHTWEIGHT PADDLING GLOVE



INFERNO MITT



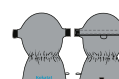
SEEKER



SCOUT



KOZEE GLOVE



KAYAK MITT



PORTAGE



NOMAD

WWW.KOKATAT.COM



KOKATAT 2024 PRICING PROGRAM

Order Minimum

New dealer first order minimum \$1000

- Minimum order \$250 each
- Annual minimum \$2500

Preseason Pricing/Programs/Deadlines

- All preseason orders for shipment after January 15, 2024
- For preseason orders placed by August 15, 2023
 - Individual order minimum \$1500
 - Multiple individual preseason orders can be placed at this amount.
 - 6% 30 days, NET 60 (on approved credit)
 - For stocking dealers with preseason orders totaling \$5000 and placed by August 15, 2022, discount/terms will be effective for all in season reorders.
- For preseason orders placed by September 15, 2023.
 - Order minimum \$1500
 - Multiple preseason orders can be placed at this amount.
 - 4% 30 days, NET 45 (on approved credit)
- Preseason orders may be modified or cancelled by notifying Kokatat Customer Service AT LEAST 2 WEEKS PRIOR TO SCHEDULED SHIPMENT.
- Preseason discount/terms will not be available for orders placed after September 15, 2023.
- Please note: discount will be reduced by 3% (processing fee) for credit card payments on preseason orders.

In-season/ASAP Orders

- 2% 20 days, NET 30 (on approved credit)

Custom Labeling/Embroidery

- Embroidery/Heat Transfers, contact Kokatat Customer Service for details and quotation.

Payment Terms

- Authorized wholesale customers may pay for purchases by company check, money order or open account. Credit application and personal guarantee are required for a Kokatat authorized open account, acceptance pending credit review and approval. Customers may pay by credit card (VISA, Mastercard, Discover or American Express).

Kokatat Authorized Open Account

- Kokatat standard in-season/ASAP order payment terms are NET 30. Credit limits will be established for each authorized dealer qualifying for open credit terms. A 1.5% interest charge will be applied monthly (18% annually) to all overdue invoices/payments. Merchandise will not be shipped to any overdue customer.

Pro Deal Program (Authorized Wholesale Accounts)

- Application and qualifications are available at www.kokatat.com/pro

Returns

- For return authorization, please call (707-822-7621) or email (kokatat@kokatat.com) Kokatat Customer Service. All returns must be accompanied by a copy of invoice or packing list and have RA number clearly marked on the box exterior. All first quality returns must be in clean, like-new condition with hang tags attached, otherwise there will be a 15% re-stocking charge assessed for the items returned.

Kokatat Warranty

- Kokatat Products are fully guaranteed to the original owner against defects in materials and workmanship for the reasonable life of the garment. Products found to be defective will be repaired or replaced at Kokatat's option. Repair due to normal wear and tear, accident, abuse, etc. will be made for a reasonable charge. Latex gaskets are not covered by Kokatat warranty. Kokatat specifically disavows any other representative warranty or liability relative to the condition or use of the product.

Warranty Returns/Repairs

- A return authorization is required for all returns to Kokatat factory repair center in Arcata, California. California state law requires all used products returned for repair must be freshly laundered prior to shipment to Kokatat. A \$25 fee per item will be assessed for washing soiled garments. All returns must be shipped prepaid to Kokatat.



PROUDLY INNOVATING & MANUFACTURING IN
ARCATA, CA, USA FOR MORE THAN 50 YEARS.

REPS & DISTRIBUTORS

REGIONAL REPS

NEW ENGLAND: Connecticut, Maine, Massachusetts, New Hampshire, Rhode Island, Vermont

Jim Kaiser • kaiserrep@gmail.com • o: 207.624.2065

NORTHEAST: Delaware, District of Columbia, Maryland, New Jersey, New York, Pennsylvania

Tom Harsh • thomas.harsh@verizon.net

t: 800.432.5957 c: 516.848.1405 f: 516.432.2561

SOUTHEAST, MID-ATLANTIC: Alabama, Florida, Georgia, Kentucky, Mississippi, North Carolina, South Carolina, Tennessee, Virginia, West Virginia

Scott Sullivan • hmscottsullivan@gmail.com

c: 828.712.3282

MIDWEST: Illinois, Indiana, Iowa, Kansas, Michigan, Minnesota, Missouri, North Dakota, Nebraska, Ohio, South Dakota, Wisconsin

John Horsnell • john.horsnell@gmail.com

c: 608.206.9242

ROCKIES - WEST: Arizona, California, Colorado, Idaho, Montana, Nevada, New Mexico, Texas, Utah, Wyoming

Ted Keyes • tedkeyesindustries@gmail.com

c: 208.867.8732 f: 815.572.8687

PACIFIC NORTHWEST: Alaska, Oregon, Washington

Karl Kohagen • karlkohagen@hotmail.com

c: 425.478.5427

CANADA:

Nikki Rekman • nikki@rekman.ca

o: 604.824.2988 c: 604.626.6922

IN-HOUSE & INTERNATIONAL

ARKANSAS, HAWAII, LOUISIANA, OKLAHOMA:

Kokatat • kokatat@kokatat.com

5350 Ericson Way, Arcata, CA 95521

t: 800.225.9749 o: 707.822.7621 f: 707.822.8481

INTERNATIONAL DISTRIBUTORS

AUSTRALIA: Paddle Sports Australia

paddlesports@paddlesports.com.au • www.paddlesports.com.au

AUSTRIA, GERMANY, SWITZERLAND, NORWAY, THE NETHERLANDS, FRANCE, SPAIN, PORTUGAL, ANDORRA, FINLAND AND UK: System X • info@systemxkayak.co.uk • www.systemxeurope.com

DENMARK, SWEDEN: Team kayak - Kajakkæden Aps

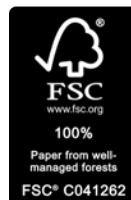
info@kajakkaeden.dk • www.teamkayak.dk

IRELAND: I-Canoe

shop@i-canoe.com • www.i-canoe.com

NEW ZEALAND: Day Two

info@daytwo.co.nz • www.daytwo.co.nz



30% PCR, produced with ~50% renewable energy, FSC certified

